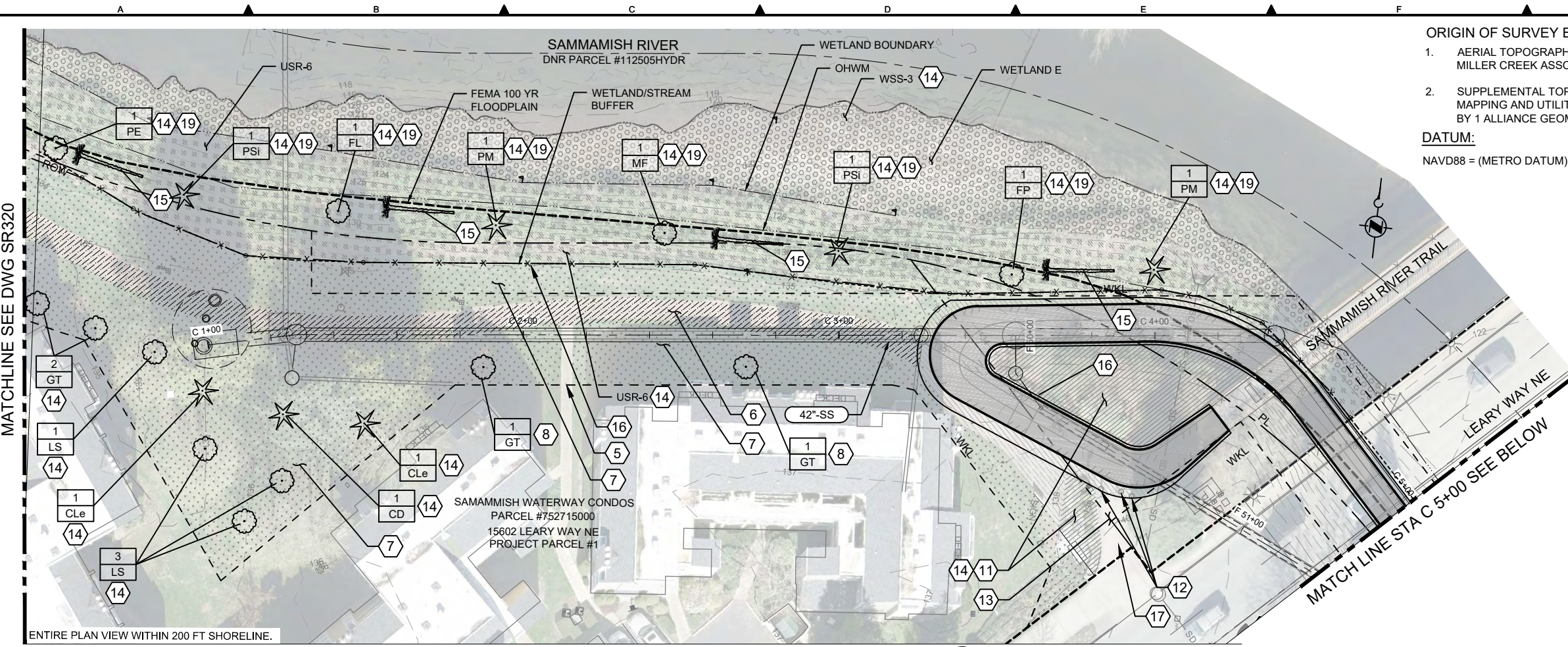
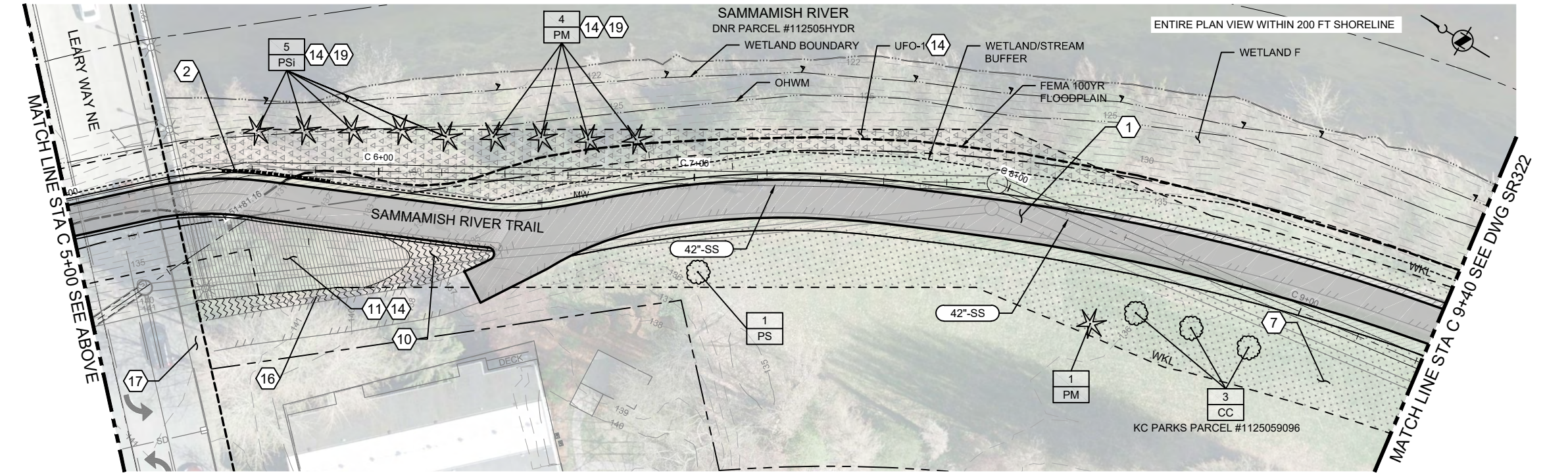


C:\pwworking\user\2001775LP-SR321.dwg | Layout: SR321
 XREF: Oct 10, 2019 - 12:30:29pm By HPANCHER
 XREF: X_LIF_Border_for_SR.dwg, X_Vpoin.dwg, X_Survey_North.dwg, X_Ext_Sewer.dwg, X_Potholes.dwg, X_Parcel_Numbers.dwg, X_Restoration_Background.dwg, X_Wetland_Stream_Buffers.dwg, X_Critical_Root_Zones.dwg, X_FEMA_Floodplain.dwg, X_Tree_Points_IMAGES: file03.jpg



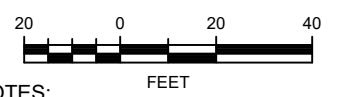
SITE RESTORATION PLAN 1
 C301



SITE RESTORATION PLAN 2
 C302

CALL 24 HOURS BEFORE YOU DIG: 811

ORIGIN OF SURVEY BASE MAPS:
 1. AERIAL TOPOGRAPHIC MAPPING BY MILLER CREEK ASSOCIATES.
 2. SUPPLEMENTAL TOPOGRAPHIC MAPPING AND UTILITY LOCATIONS BY 1 ALLIANCE GEOMATICS.
DATUM:
 NAVD88 = (METRO DATUM) - 96.42 FT



- KEY NOTES:**
- 1 SEE TRAIL RESTORATION AND GRADING PLAN ON DWG SR301.
 - 2 ROOT BARRIER. SEE DWG SR902 FOR DETAILS.
 - 3 NOT USED.
 - 4 NOT USED.
 - 5 MATCH FLUSH AT EXISTING. REFER TO KEYNOTE 6.
 - 6 5/8" MINUS CRUSHED LEDGERROCK, 100% FRACTURED (4" MINIMUM COMPACTED DEPTH) MATCH EXISTING GRADE MINIMUM WIDTH AND EXTENT INDICATED.
 - 7 WHERE DISTURBED SEED WITH TURF SEED MIX.
 - 8 REPLACE THESE TWO TREES IN KIND, LESS THAN 6" CALIPER. REFER TO PLANTING SCHEDULE ON SR333 AND RELATED NOTES FOR THESE TWO TREES.
 - 9 NOT USED.
 - 10 TO EXTENTS INDICATED, PROVIDE WOOD CHIP MULCH.
 - 11 WHERE DISTURBED, SEED WITH UPLAND RIPARIAN MIX OF SHRUBS, GROUND COVER PERENNIALS AND MULCH.
 - 12 WHERE IN CONFLICT, REMOVE EXISTING BOLLARDS AND FENCE. PROTECT AND SAVE FOR INSTALLATION SURVEY LOCATION OF BOLLARDS AND FENCE REMOVAL. PLACE SAVED BOLLARDS AND FENCE TO MATCH EXISTING LOCATION.
 - 13 REPLACE CONCRETE PANEL APPROACH TRAIL IN WHOLE PANEL SECTIONS TO THE NEAREST JOINT OUTSIDE CONSTRUCTION LIMIT PER DETAIL COR-303 MINIMUM LENGTH 38 FEET.
 - 14 PLANT SCHEDULE AND DETAILS PER DRAWINGS SR332, SR333, SR902, SR903 AND SR904.
 - 15 DOWNED LARGE WOODY DEBRIS (LWD), LOGS WITH ROOT WAD ATTACHED. SEE DETAIL ON DWG SR903.
 - 16 PROVIDE DOWEL RAIL FENCE PER DETAIL 1/SR903 TO EXTENTS INDICATED.
 - 17 TYPE "2" DRIVEWAY PER COR STANDARD DETAIL 306.
 - 18 NOT USED.
 - 19 CRITICAL AREAS REPLACEMENT TREE PER CRITICAL AREAS MANAGEMENT DESIGN.

- NOTES:**
- 1. UNLESS OTHERWISE INDICATED, RESTORE ALL IMPACTED AREAS TO EXISTING CONDITIONS.
 - 2. PLACE ALL SAVED BENCHES, SIGNS, AND TRASH RECEPTACLES TO MATCH EXISTING LOCATIONS.

LEGEND:

#	QUANTITY
PI	PLANT IDENTIFICATION (BOTANICAL NAME ABBREVIATED)

NO	REVISION DESCRIPTION	BY	APVD	DATE



PERMIT ISSUE DRAWING

This document version is designed to contain sufficient relevant information for the applicable Permit Review submittal and approval process.

October 2019

DESIGNED/DRAWN: H. FANCHER	SCALE: AS NOTED
PROJECT ENGINEER: D. APPLIGATE	REFERENCE: 0" = 1'
DESIGN APPROVAL: XXX	FACILITY NUMBER: XXX
PROJECT ACCEPTANCE: XXX	CONTRACT NO.: E00335E14

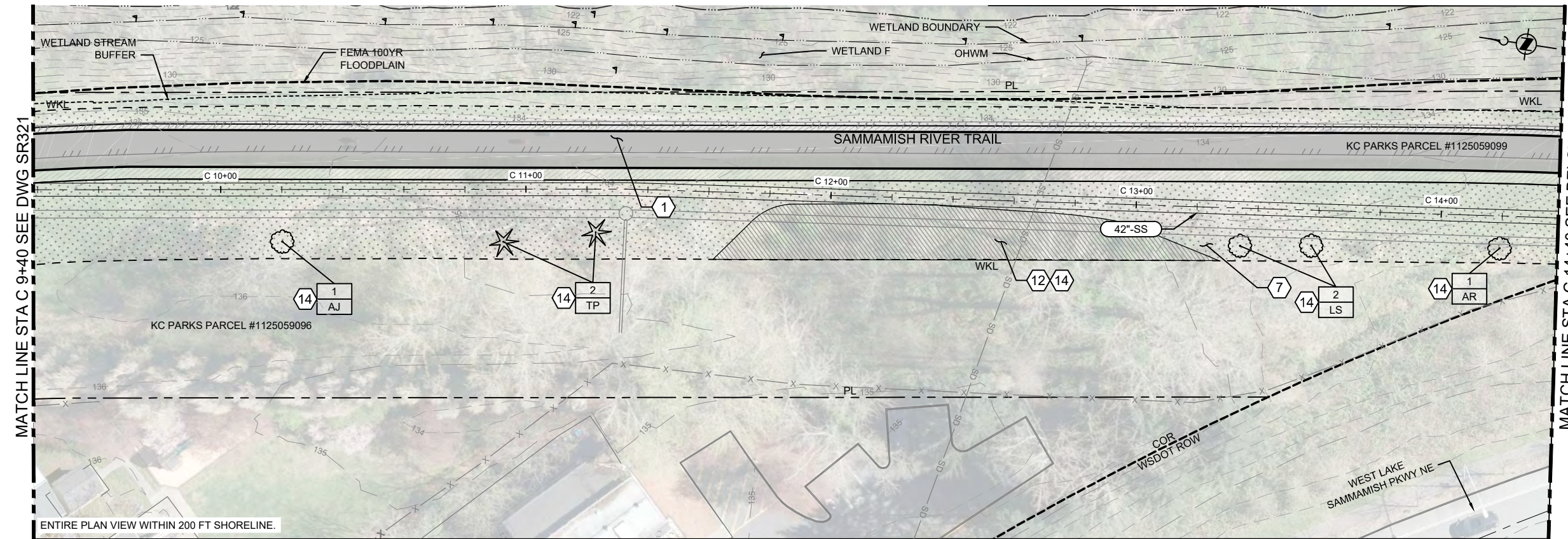
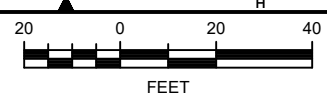


DEPARTMENT OF NATURAL RESOURCES & PARKS
 WASTEWATER TREATMENT DIVISION
 LAKE HILLS TRUNK AND NORTHWEST LAKE SAMMAMISH INTERCEPTOR PROJECT

SEGMENT 3
SITE RESTORATION PLAN
 STA C 1+00 TO STA C 9+40

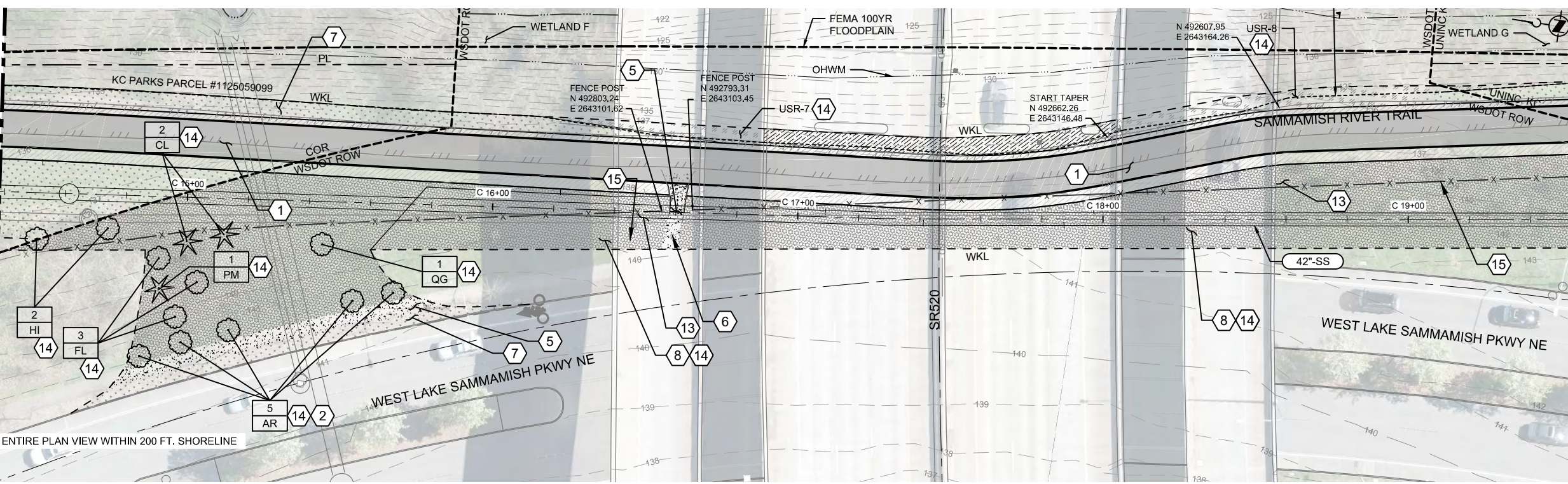
DCN:	DATE: September 2019
PROJECT FILE NO:	DRAWING NO: SR321
SHT NO / TOTAL 160 / 357	REV NO: 0

C:\pwworking\usa\200175LP-SR322.dwg | Layout: SR322
 XREF: X:\10_2019-1231-40pm By H\FANCHER
 XREF: X:\11_Border_of_SR.dwg, X:_Demo.dwg, X_Emits.dwg, X_Survey North.dwg, X_Ex ROW.dwg, X_Esm Hatch.dwg, X_Vpans.dwg, X_Restoration Background.dwg, X_Parcel Numbers.dwg, X_Critical Root Zones.dwg, X_Trench Width.dwg, X_IMAGES: 11603.jpg, 11604.jpg



SITE RESTORATION PLAN 1
C303

- KEY NOTES:**
- 1 SEE TRAIL RESTORATION AND GRADING PLAN ON DWG SR302.
 - 2 REPLACEMENT OF SIGNIFICANT TREE REMOVAL IN PUBLIC RIGHT-OF-WAY.
 - 3 NOT USED.
 - 4 NOT USED.
 - 5 REPLACE CONCRETE PANEL APPROACH TRAIL IN WHOLE PANEL SECTIONS TO THE NEAREST JOINT OUTSIDE CONSTRUCTION LIMITS PER DETAIL COR-303. MINIMUM LENGTHS ARE INDICATED.
 - 6 MATCH EXISTING.
 - 7 WHERE DISTURBED, SEED WITH TURF SEED MIX.
 - 8 WHERE DISTURBED, SEED WITH POLLINATOR MIX OF SHRUBS, GROUND COVER, PERENNIALS, AND MULCH.
 - 9 NOT USED.
 - 12 WHERE DISTURBED, SEED WITH UPLAND RIPARIAN MIX OF SHRUBS, GROUND COVER PERENNIALS AND MULCH.
 - 13 EXISTING BOULDERS ON TRAIL WESTERN EDGE AT LOCATIONS INDICATED AND WHICH ARE IMPACTED BY CONSTRUCTION SHALL BE REMOVED AND PROTECTED AND SAVED FOR REINSTALLATION. SURVEY LOCATIONS OF BOULDERS BEFORE REMOVAL AND PLACE SAVED BOULDERS TO MATCH EXISTING LOCATION.
 - 14 REPLACEMENT TREE AND PLANT SCHEDULE AND DETAILS PER DRAWINGS SR332, SR333, SR902, SR903, AND SR904.
 - 15 REMOVE EXISTING CHAIN LINK FENCE WITHIN WORKING LIMITS. SURVEY LOCATION OF FENCE BEFORE REMOVAL. PROVIDE WSDOT TYPE 4 CHAIN LINK FENCE PER STANDARD DETAIL FS-1.1 TO MATCH EXISTING LOCATIONS AS NOTED.
 - 16 NOT USED.



SITE RESTORATION PLAN 2
C304

- NOTES:**
1. UNLESS OTHERWISE INDICATED, RESTORE ALL IMPACTED AREAS TO EXISTING CONDITIONS.
 2. PLACE SAVED BENCHES, SIGNS, AND TRASH RECEPTACLES TO MATCH EX LOCATION.
- NOTES TO REVIEWER:**
1. SUPPLEMENTAL SURVEY OF BOULDERS REQUIRED BETWEEN STATIONS 16+00 AND 19+00.
- LEGEND:**
- | | |
|----|---|
| # | QUANTITY |
| PI | PLANT IDENTIFICATION (BOTANICAL NAME ABBREVIATED) |
- ORIGIN OF SURVEY BASE MAPS:**
1. AERIAL TOPOGRAPHIC MAPPING BY MILLER CREEK ASSOCIATES.
 2. SUPPLEMENTAL TOPOGRAPHIC MAPPING AND UTILITY LOCATIONS BY 1 ALLIANCE GEOMATICS.

CALL 24 HOURS BEFORE YOU DIG: 811

DATUM:
NAVD88 = (METRO DATUM) - 96.42 FT

NO	REVISION DESCRIPTION	BY	APVD	DATE



PERMIT ISSUE DRAWING

This document version is designed to contain sufficient relevant information for the applicable Permit Review submittal and approval process.

October 2019

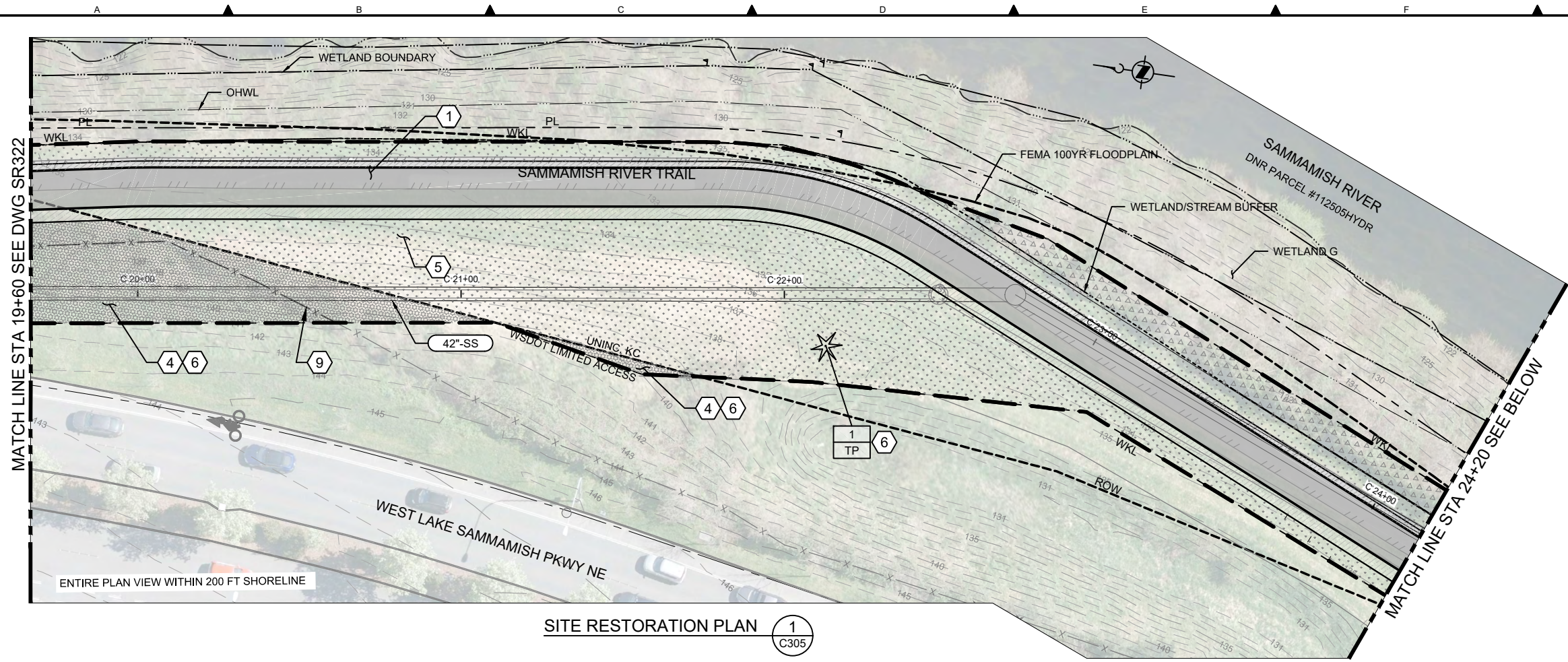
DESIGNED/DRAWN: H. FANCHER
 PROJECT ENGINEER: D. APPLIGATE
 DESIGN APPROVAL: XXX
 PROJECT ACCEPTANCE: XXX

SCALE: AS NOTED
 REFERENCE: 1"
 FACILITY NUMBER: XXX
 CONTRACT NO: E00335E14

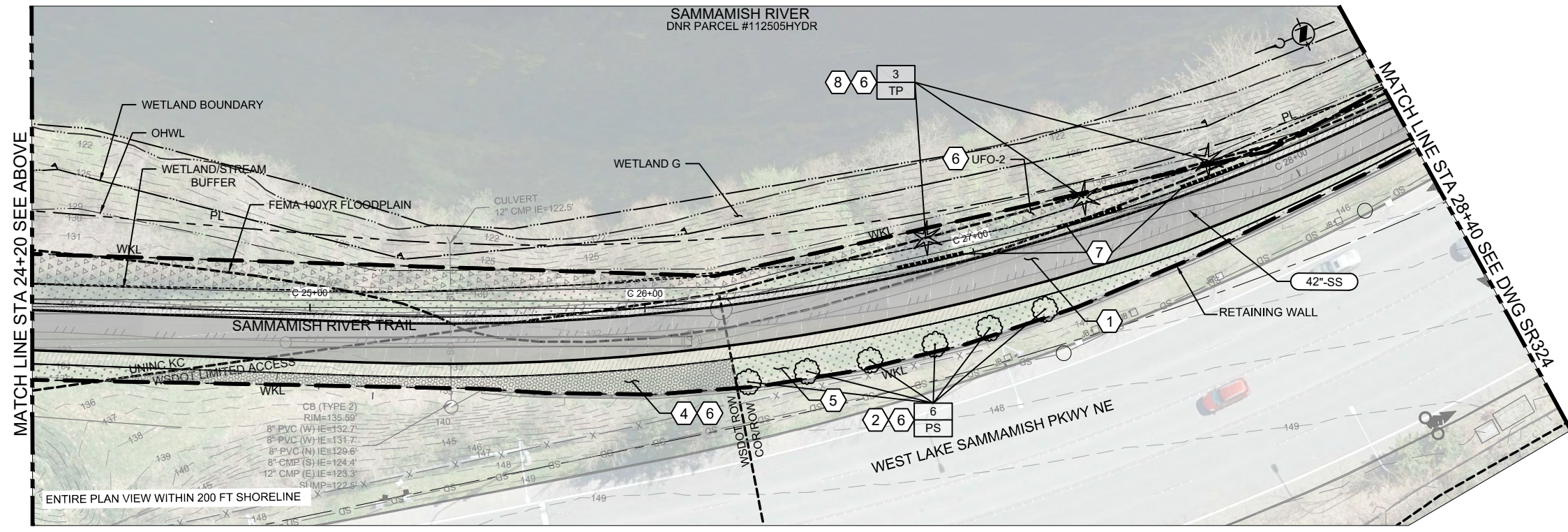
SEGMENT 3
SITE RESTORATION PLAN
STA C 9+40 TO STA C 19+60

DCN: _____
 DATE: September 2019
 PROJECT FILE NO: _____
 DRAWING NO: **SR322**
 SHT NO / TOTAL REV NO: 161 / 357 0

C:\pwworking\user\2001175\LP-SR323.dwg | Layout: SR323
 PLOTTED: Oct 10, 2019 12:35:01pm By: H.FANCHER
 XREFS: X:\EIR\SR323\X_Survey North.dwg, X:\EIR\Stewer.dwg, X:\EIR\Site Features North.dwg, X:\EIR\ROW.dwg, X:\Restoration Background.dwg, X:\WETLAND AND STREAM BUFFERS.dwg, X:\Parcel Numbers.dwg, X:\Critical Root Zones.dwg, X:\Trench Width.dwg, X:\FEMA Floodplain.dwg, X:\Tree_Veg_Zone.dwg, X:\LH_Border_for_LFP.dwg
 IMAGES: 11604.jpg



SITE RESTORATION PLAN 1
C305



SITE RESTORATION PLAN 2
C306

- KEY NOTES:**
- 1 SEE TRAIL RESTORATION AND GRADING PLAN ON DWG SR303.
 - 2 REPLACEMENT OF SIGNIFICANT TREE REMOVAL IN PUBLIC RIGHT-OF-WAY.
 - 3 NOT USED.
 - 4 WHERE DISTURBED, SEED WITH POLLINATOR MIX OF SHRUBS, GROUND COVER, PERENNIALS, AND MULCH.
 - 5 WHERE DISTURBED, SEED WITH TURF SEED MIX.
 - 6 PLANT SCHEDULE AND DETAILS PER DRAWINGS SR332, SR333, SR902, SR903, AND SR904.
 - 7 ROOT BARRIER. SEE DWG SR902 FOR DETAILS.
 - 8 CRITICAL AREAS REPLACEMENT TREE PER CRITICAL AREAS MANAGEMENT DESIGN.
 - 9 REMOVE EXISTING CHAIN LINK FENCE WITHIN WORKING LIMITS. SURVEY LOCATION BEFORE REMOVAL. PROVIDE WSDOT TYPE 4 CHAINLINK FENCE PER STANDARD DETAIL FS-1.1 TO MATCH EXISTING LOCATION.

- NOTES:**
- 1. UNLESS SHOWN OTHERWISE, RESTORE ALL IMPACTED AREAS TO EXISTING CONDITIONS.
 - 2. PLACE SAVED BENCHES, SIGNS, AND TRASH RECEPTACLES TO MATCH EXISTING LOCATION.

- NOTES TO REVIEWER:**
- 1. LOCATION AND DETAIL FOR SAFETY CHAIN LINK FENCE TO BE PROVIDED BY KC PARKS.
 - 2. DESIGN OF SOIL NAILCOVERS TO BE SUBMITTED TO KC PARKS FOR REVIEW.

- LEGEND:**
- # QUANTITY
 - PI PLANT IDENTIFICATION (BOTANICAL NAME ABBREVIATED)

- ORIGIN OF SURVEY BASE MAPS:**
- 1. AERIAL TOPOGRAPHIC MAPPING BY MILLER CREEK ASSOCIATES.
 - 2. SUPPLEMENTAL TOPOGRAPHIC MAPPING AND UTILITY LOCATIONS BY 1 ALLIANCE GEOMATICS.

DATUM:
NAVD88 = (METRO DATUM) - 96.42 FT

CALL 24 HOURS BEFORE YOU DIG: 811

NO	REVISION DESCRIPTION	BY	APVD	DATE



PERMIT ISSUE DRAWING

This document version is designed to contain sufficient relevant information for the applicable Permit Review submittal and approval process.

October 2019

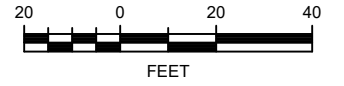
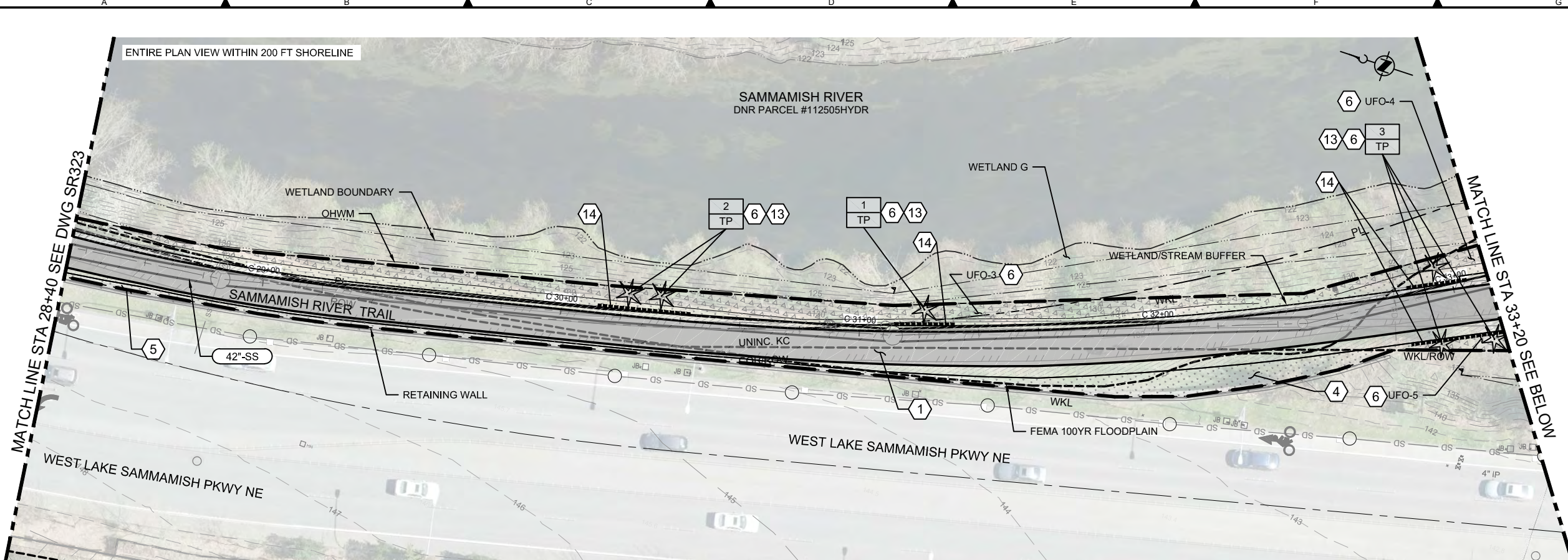
DESIGNED/DRAWN: H. FANCHER	SCALE: AS NOTED
PROJECT ENGINEER: D. APPLIGATE	0 REFERENCE 1"
DESIGN APPROVAL: XXX	FACILITY NUMBER: XXX
PROJECT ACCEPTANCE: XXX	CONTRACT NO: E00335E14



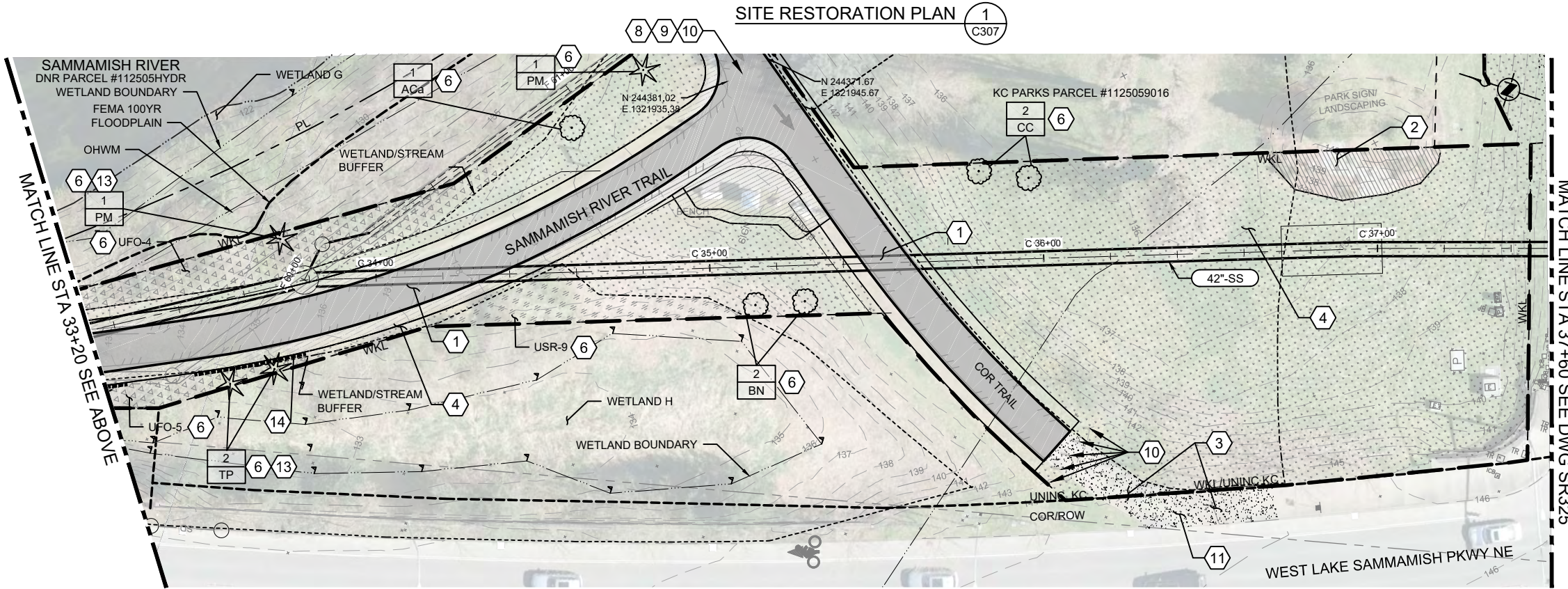
DEPARTMENT OF NATURAL RESOURCES & PARKS
 WASTEWATER TREATMENT DIVISION
 LAKE HILLS TRUNK AND NORTHWEST LAKE SAMMAMISH INTERCEPTOR PROJECT

**SEGMENT 3
 SITE RESTORATION PLAN
 STA 19+60 TO STA 28+40**

DCN:	DATE: September 2019
PROJECT FILE NO:	DRAWING NO: SR323
SHT NO / TOTAL 162 / 357	REV NO: 0



- KEY NOTES:**
- 1 SEE TRAIL RESTORATION AND GRADING PLAN ON DWG SR304.
 - 2 WHERE DISTURBED, SEED WITH UPLAND RIPARIAN MIX OF SHRUBS, GROUND COVER, PERENNIALS AND MULCH.
 - 3 REPLACE CONCRETE PANEL APPROACH TRAIL IN WHOLE PANEL SECTIONS TO THE NEAREST JOINT PER DETAIL COR 303. REPLACE TO EXTENT DAMAGED.
 - 4 WHERE DISTURBED, SEED WITH TURF SEED MIX.
 - 5 AFTER 3' OF 3/8" CRUSHED LEDGE ROCK, PROVIDE 5' WIDTH OF TURF SEED MIX ON WESTERN SHOULDER OR, IF LESS THAN 8' AVAILABLE BETWEEN WESTERN EDGE OF TRAIL AND WORKING LIMIT, UP TO WORKING LIMIT.
 - 6 PLANT SCHEDULE AND DETAILS PER DRAWINGS SR332, SR333, SR902, SR903, AND SR904.
 - 7 PROTECT, OR REMOVE AND REINSTALL EXISTING PARK SIGN.
 - 8 SAW CUT EXISTING PAVEMENT AT LIMITS INDICATED. EMULSIFIED ASPHALT GRADE CSS-1 TACK SHALL BE APPLIED AT EDGE OF CUT.
 - 9 MATCH EXISTING.
 - 10 REMOVE EXISTING BOLLARDS AND SAVE FOR REINSTALLATION. SURVEY LOCATION OF BOLLARDS BEFORE REMOVAL. PLACE SAVED BOLLARDS TO MATCH EXISTING.
 - 11 TYPE "2" DRIVEWAY PER COR STANDARD DETAIL 306.
 - 12 NOT USED.
 - 13 CRITICAL AREAS REPLACEMENT TREE PER CRITICAL AREAS MANAGEMENT DESIGN.
 - 14 ROOT BARRIER. SEE DWG SR902 FOR DETAILS.



- NOTES:**
- 1. UNLESS OTHERWISE INDICATED, RESTORE ALL IMPACTED AREAS TO EXISTING CONDITIONS.
 - 2. PLACE SAVED BENCHES, SIGNS, AND TRASH RECEPTACLES TO MATCH EXISTING LOCATION.
- NOTES TO REVIEWER:**
- 1. LOCATION AND DETAIL FOR SAFETY CHAIN LINK FENCE TO BE PROVIDED BY KC PARKS.
 - 2. DESIGN OF SOIL NAILCOVERS TO BE SUBMITTED TO KC PARKS FOR REVIEW.

- LEGEND:**
- | | |
|----|---|
| # | QUANTITY |
| PI | PLANT IDENTIFICATION (BOTANICAL NAME ABBREVIATED) |
- ORIGIN OF SURVEYBASE MAPS:**
- 1. AERIAL TOPOGRAPHIC MAPPING BY MILLER CREEK ASSOCIATES.
 - 2. SUPPLEMENTAL TOPOGRAPHIC MAPPING AND UTILITY LOCATIONS BY 1 ALLIANCE GEOMATICS.
- DATUM:**
NAVD88 = (METRO DATUM) - 96.42 FT

CALL 24 HOURS BEFORE YOU DIG: 811

C:\pwworking\user\2001175L\SR324.dwg | Layout: SR324
 PLOTTED: Oct 10, 2019 12:34:19pm By: H.FANCHER
 XREF: x:\yprints.dwg; x:\esms.dwg; x:\survey\North.dwg; x:\Ex ROW.dwg; x:\Pathlines.dwg; x:\Esmr Hatch.dwg; x:\Wetland and Stream Buffers.dwg; x\FEMA Floodplain.dwg; x\Critical Area Zones.dwg; x_Trench Width.dwg; x_Tree Points.dwg; x_Tree_Veg_Zone.dwg; x_LH_Border_for_LPP.dwg
 IMAGES: file04.jpg; file05.jpg

NO	REVISION DESCRIPTION	BY	APVD	DATE

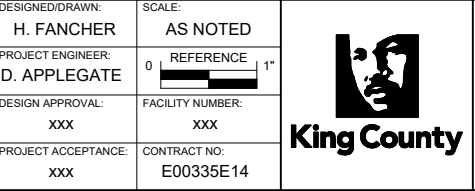


PERMIT ISSUE DRAWING

This document version is designed to contain sufficient relevant information for the applicable Permit Review submittal and approval process.

October 2019

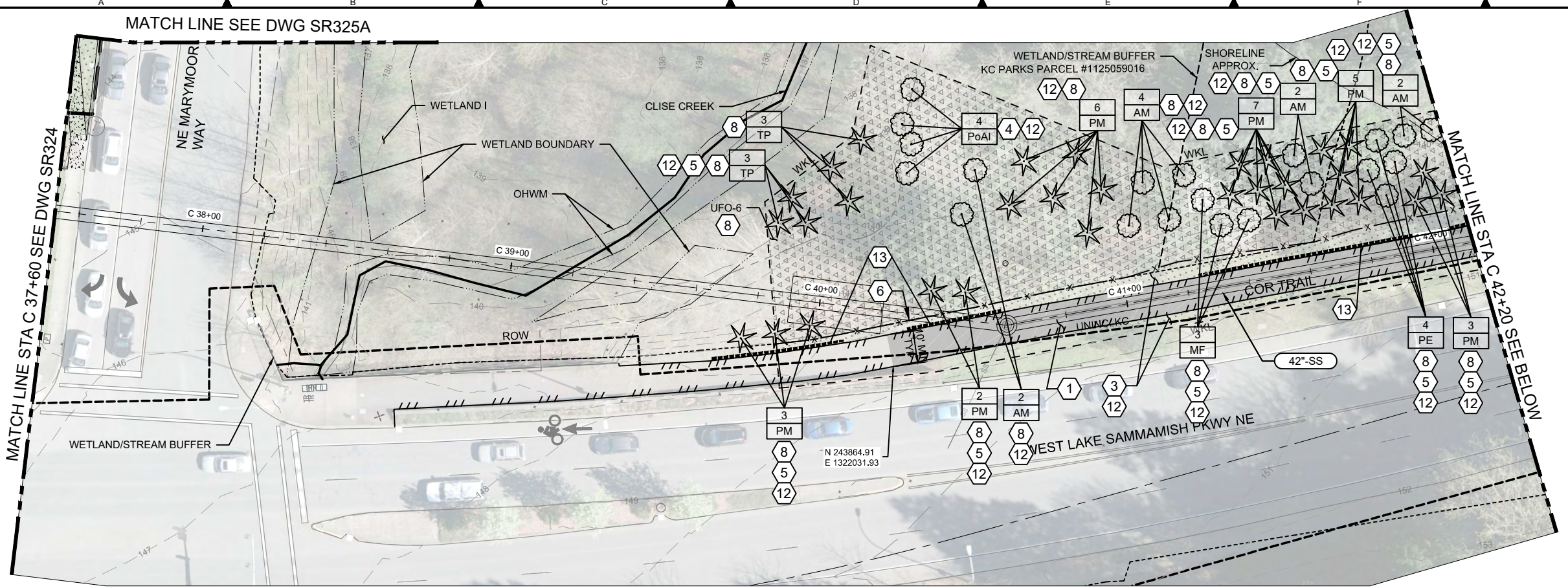
DESIGNED/DRAWN: H. FANCHER	SCALE: AS NOTED
PROJECT ENGINEER: D. APPLIGATE	0 REFERENCE 1"
DESIGN APPROVAL: XXX	FACILITY NUMBER: XXX
PROJECT ACCEPTANCE: XXX	CONTRACT NO: E00335E14



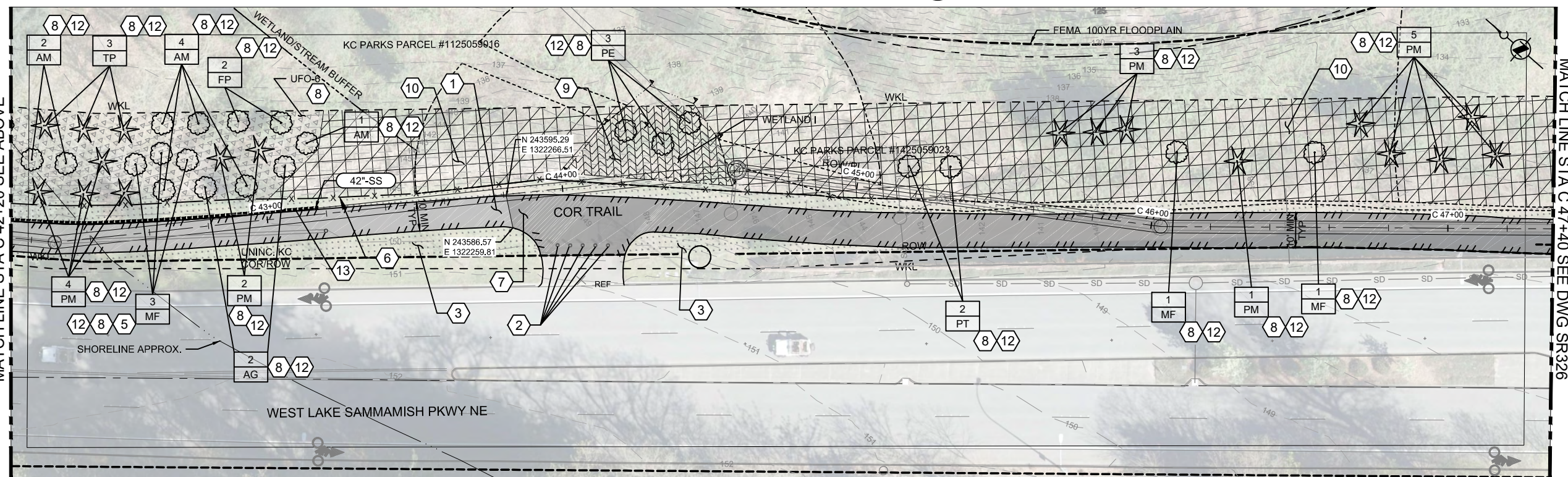
DEPARTMENT OF NATURAL RESOURCES & PARKS
 WASTEWATER TREATMENT DIVISION
 LAKE HILLS TRUNK AND NORTHWEST
 LAKE SAMMAMISH INTERCEPTOR PROJECT

**SEGMENT 3
 SITE RESTORATION PLAN
 STA 28+40 TO STA 37+60**

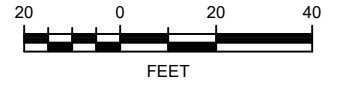
DCN:	DATE: September 2019
PROJECT FILE NO:	DRAWING NO: SR324
SHT NO / TOTAL 163 / 357	REV NO: 0



SITE RESTORATION PLAN 1
C309



SITE RESTORATION PLAN 2
C310



- KEY NOTES:**
- 1 REPLACE TRAIL AND APPROACH TRAILS PER DETAIL 5/SR308. MATCH EXISTING WIDTH AND EXTENTS INDICATED.
 - 2 WHERE IN CONFLICT, REMOVE EXISTING BOLLARDS. PROTECT AND SAVE FOR REINSTALLATION. SURVEY LOCATION OF BOLLARDS BEFORE REMOVAL. PLACE SAVED BOLLARDS TO MATCH EXISTING LOCATION.
 - 3 WHERE DISTURBED, SEED WITH TURF SEED MIX.
 - 4 THE REMOVAL OF THESE (4) HISTORIC TREES ARE TO BE REPLANTED IN SAME LOCATION AS REMOVED PER CULTURAL RESOURCES. REFER TO PLANTING SCHEDULE 4/SR333.
 - 5 THESE TREES TO BE SPACED AT 9'-0" O.C.
 - 6 PROVIDE DOWEL RAIL FENCE PER DETAIL 1/SR904 TO EXTENTS INDICATED.
 - 7 REPLACE TRAIL PER DETAIL 6/SR308. MATCH EXISTING WIDTH AND MINIMUM EXTENTS INDICATED.
 - 8 PLANT SCHEDULE AND DETAILS PER DRAWINGS SR332, SR333, SR902, SR903, AND SR904.
 - 9 WHERE DISTURBED, SEED WITH WETLAND SEED MIX.
 - 10 WHERE DISTURBED, SEED WITH UPLAND SEED MIX.
 - 11 NOT USED.
 - 12 CRITICAL AREAS REPLACEMENT TREE PER CRITICAL MANAGEMENT DESIGN.
 - 13 ROOT BARRIER. SEE DWG SR902 FOR DETAILS.

NOTES:

1. UNLESS INDICATED OTHERWISE, RESTORE ALL IMPACTED AREAS TO EXISTING CONDITIONS.

NOTES TO REVIEWER:

1. FURTHER COORDINATION WITH COR AND KC PARKS REQUIRED REGARDING EXISTING IRRIGATION SYSTEMS.

ORIGIN OF SURVEYBASE MAPS:

1. AERIAL TOPOGRAPHIC MAPPING BY MILLER CREEK ASSOCIATES.
2. SUPPLEMENTAL TOPOGRAPHIC MAPPING AND UTILITY LOCATIONS BY 1 ALLIANCE GEOMATICS.

DATUM:
NAVD88 = (METRO DATUM) - 96.42 FT

LEGEND:

#	QUANTITY
PI	PLANT IDENTIFICATION (BOTANICAL NAME ABBREVIATED)

CALL 24 HOURS BEFORE YOU DIG: 811

C:\pwworking\user\2001175L\SR325.dwg | Layout: SR325
 PLOTTED: Oct 10, 2019 12:35:28pm. By: H.FANCHER
 XREF: X_Estms.dwg; X_Survey North.dwg; X_Vports.dwg; X_Ext Site Features North.dwg; X_Ext ROW.dwg; X_Potholes.dwg; X_Esmt Hatch.dwg; X_Restoration Background.dwg; X_Wetland AND Stream Buffers.dwg; X_Critical Root Zones.dwg; X_Trench Width.dwg; X_FEMA Floodplain.dwg; X_Tree Points.dwg; IMAGES: file05.jpg

NO	REVISION DESCRIPTION	BY	APVD	DATE



PERMIT ISSUE DRAWING

This document version is designed to contain sufficient relevant information for the applicable Permit Review submittal and approval process.

October 2019

DESIGNED/DRAWN: H. FANCHER	SCALE: AS NOTED
PROJECT ENGINEER: D. APPLIGATE	0 REFERENCE 1"
DESIGN APPROVAL: XXX	FACILITY NUMBER: XXX
PROJECT ACCEPTANCE: XXX	CONTRACT NO: E00335E14



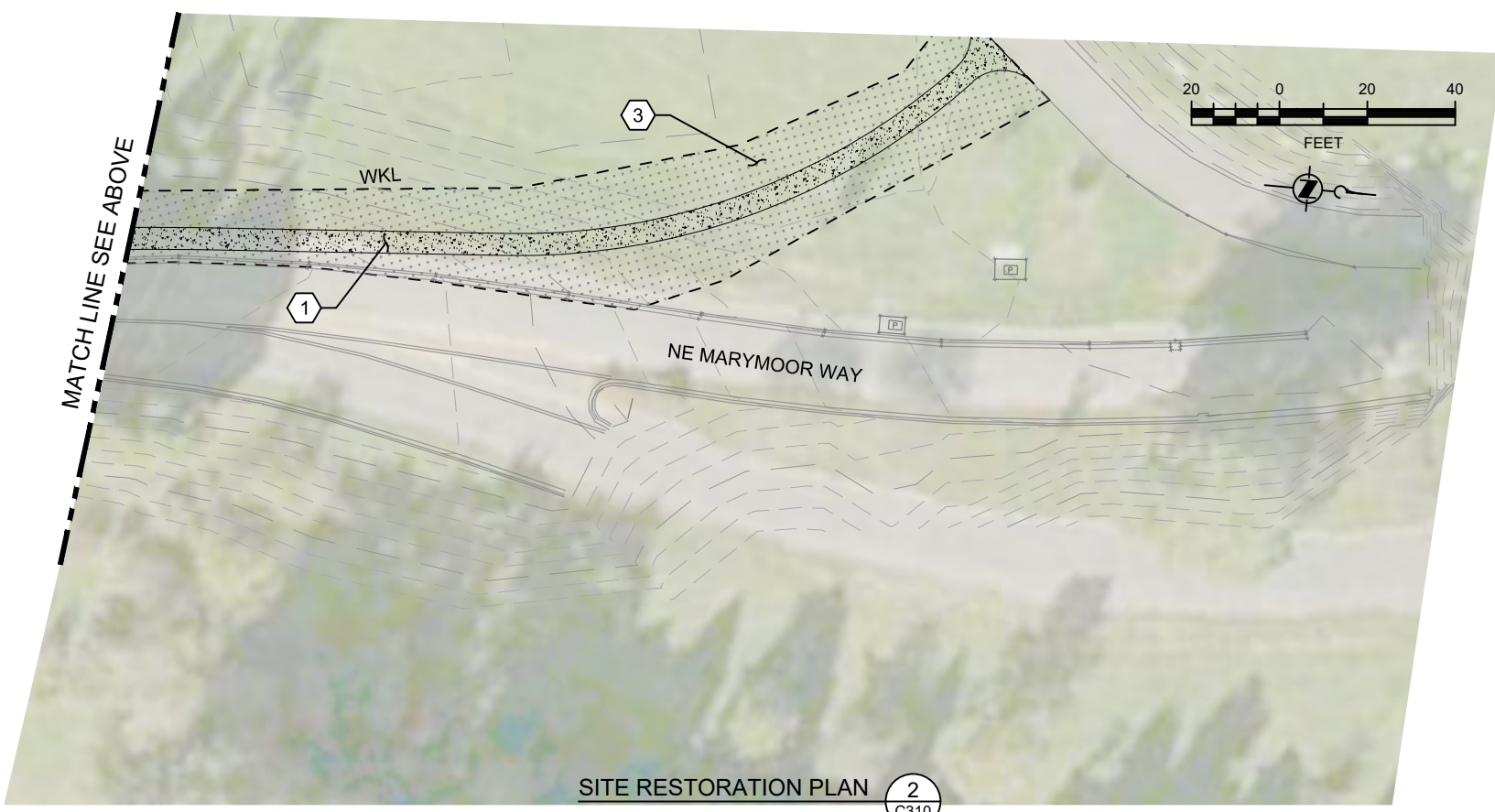
DEPARTMENT OF NATURAL RESOURCES & PARKS
 WASTEWATER TREATMENT DIVISION
 LAKE HILLS TRUNK AND NORTHWEST
 LAKE SAMMAMISH INTERCEPTOR PROJECT
SEGMENT 3
SITE RESTORATION PLAN
STA C 37+60 TO STA C 47+40

DCN:	DATE: September 2019
PROJECT FILE NO:	DRAWING NO: SR325
SHT NO / TOTAL 164 / 357	REV NO: 0



SITE RESTORATION PLAN **1**
C309

- KEY NOTES:**
- 1 SEE TRAIL RESTORATION AND GRADING PLAN ON DWG SR305.
 - 2 NOT USED.
 - 3 WHERE DISTURBED, SEED WITH TURF SEED MIX.
 - 4 WHERE DISTURBED, SEED WITH UPLAND SHRUB PLANTS (USR). SEE DWG SR332 FOR PLANTING SCHEDULE.



SITE RESTORATION PLAN **2**
C310

- NOTES:**
- 1. UNLESS INDICATED OTHERWISE, RESTORE ALL IMPACTED AREAS TO EXISTING CONDITIONS.

- ORIGIN OF SURVEYBASE MAPS:**
- 1. AERIAL TOPOGRAPHIC MAPPING BY MILLER CREEK ASSOCIATES.
 - 2. SUPPLEMENTAL TOPOGRAPHIC MAPPING AND UTILITY LOCATIONS BY 1 ALLIANCE GEOMATICS.

DATUM:
NAVD88 = (METRO DATUM) - 96.42 FT

- LEGEND:**
- # QUANTITY
 - PI PLANT IDENTIFICATION (BOTANICAL NAME ABBREVIATED)

CALL 24 HOURS BEFORE YOU DIG: 811

C:\pwworking\useral2001175\LF-SR325A.dwg | Layout: SR325A
 XREF: Sep 28, 2019 1:48:02am By: HFRANCHER
 XREF: x_Estms.dwg; x_Survey North.dwg; x_Vports.dwg; x_Ext Site Features North.dwg; x_Ext ROW.dwg; x_Potholes.dwg; x_Restoration Background.dwg; x_WETLAND AND STREAM BUFFERS.dwg; x_Parcel Numbers.dwg; x_Critical Root Zones.dwg; x_FEIMA Floodplain.dwg; x_LH_Border_for_LPP.dwg; x_Tree Preservation Plan.dwg; x_IMAGES; The66.jpg

NO	REVISION DESCRIPTION	BY	APVD	DATE



PERMIT ISSUE DRAWING

This document version is designed to contain sufficient relevant information for the applicable Permit Review submittal and approval process.

October 2019

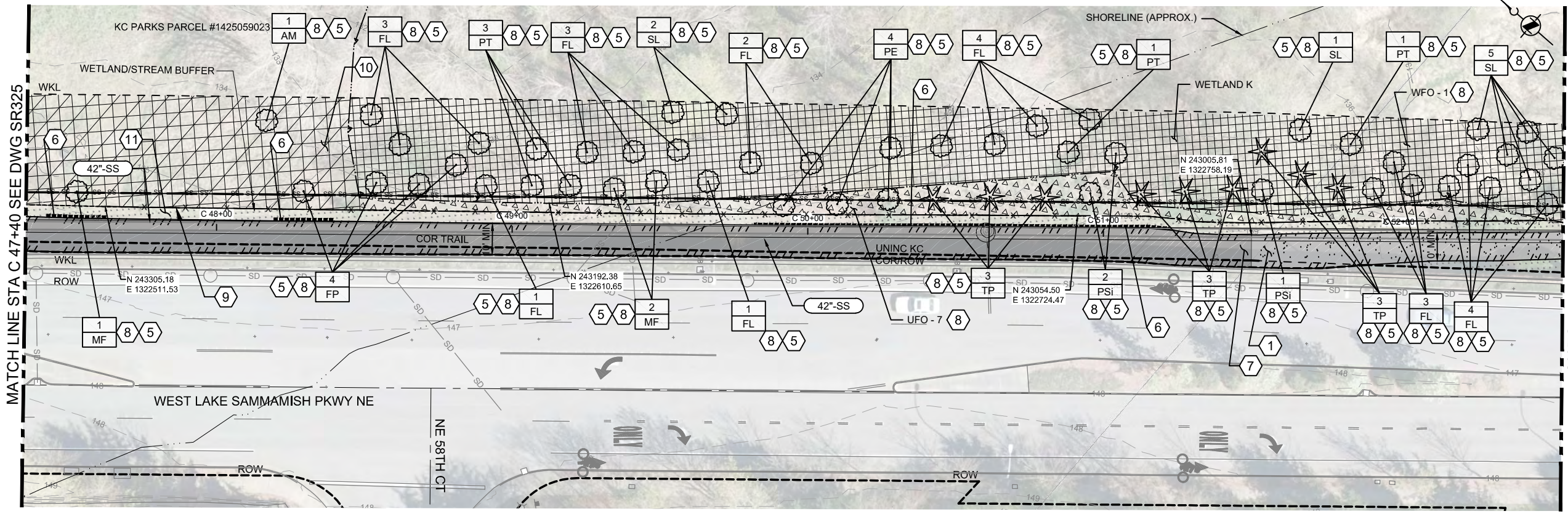
DESIGNED/DRAWN: H. FANCHER	SCALE: AS NOTED
PROJECT ENGINEER: D. APPLIGATE	REFERENCE:
DESIGN APPROVAL: XXX	FACILITY NUMBER: XXX
PROJECT ACCEPTANCE: XXX	CONTRACT NO: E00335E14

DCN:
DATE: September 2019
PROJECT FILE NO:
DRAWING NO: SR325A
SHT NO / TOTAL 175 / 357
REV NO: 0

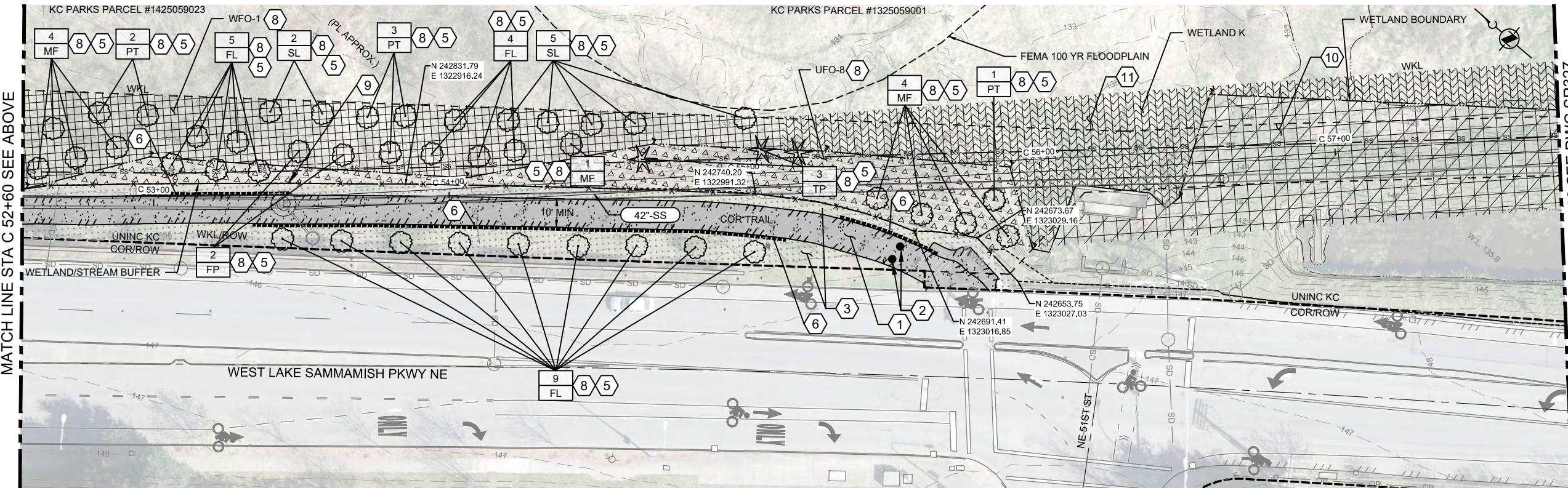


DEPARTMENT OF NATURAL RESOURCES & PARKS
 WASTEWATER TREATMENT DIVISION
 LAKE HILLS TRUNK AND NORTHWEST
 LAKE SAMMAMISH INTERCEPTOR PROJECT
SEGMENT 3
SITE RESTORATION PLAN
MARYMOOR PARK ENTRANCE

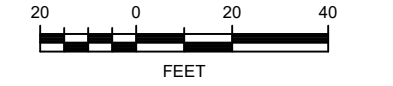
C:\pwworking\user\2001175LP-SR326.dwg | Layout: SR326
 XREF: Oct 10, 2019 12:37:19pm By HPANCHER
 XREF: X:\Ems\2019\175LP-SR326\175LP-SR326.dwg
 IMAGES: 11606.jpg, 11606.jpg



SITE RESTORATION PLAN 1
 C311



SITE RESTORATION PLAN 2
 C312



KEY NOTES:

- 1 REPLACE TRAIL AND APPROACH TRAILS PER DETAIL 5/SR308. MATCH EXISTING WIDTH AND EXTENTS INDICATED. MATCH EXISTING GRADE.
- 2 WHERE IN CONFLICT, REMOVE EXISTING BOLLARDS. PROTECT AND SAVE FOR REINSTALLATION. SURVEY LOCATION OF BOLLARDS BEFORE REMOVAL. PLACE SAVED BOLLARDS TO MATCH EXISTING LOCATION.
- 3 WHERE DISTURBED, SEED WITH TURF SEED MIX.
- 4 NOT USED.
- 5 CRITICAL AREAS REPLACEMENT TREE PER CRITICAL AREAS MANAGEMENT DESIGN.
- 6 ROOT BARRIER. SEE DWG SR902 FOR DETAILS.
- 7 REPLACE TRAIL PER DETAIL 6/SR308 MATCH EXISTING WIDTH AND EXTENTS INDICATED.
- 8 PLANT SCHEDULE AND DETAILS PER DRAWINGS SR332, SR333, SR902, SR903 AND SR904.
- 9 PROVIDE DOWEL RAIL FENCE PER DETAIL 1/SR904 TO EXTENTS INDICATED.
- 10 WHERE DISTURBED, SEED WITH UPLAND SEED MIX. (USM), REFER TO KEYNOTE 8
- 11 WHERE DISTURBED, SEED WITH WETLAND SEED MIX. (WSM), REFER TO KEYNOTE 8

NOTES:

- 1. UNLESS INDICATED OTHERWISE, RESTORE ALL IMPACTED AREAS TO EXISTING CONDITIONS.

NOTES TO REVIEWER:

- 1. FURTHER COORDINATION WITH COR AND KC PARKS REQUIRED REGARDING EXISTING IRRIGATION SYSTEMS.

ORIGIN OF SURVEYBASE MAPS:

- 1. AERIAL TOPOGRAPHIC MAPPING BY MILLER CREEK ASSOCIATES.
- 2. SUPPLEMENTAL TOPOGRAPHIC MAPPING AND UTILITY LOCATIONS BY 1 ALLIANCE GEOMATICS.

DATUM:
 NAVD88 = (METRO DATUM) - 96.42 FT

LEGEND:

#	QUANTITY
PI	PLANT IDENTIFICATION (BOTANICAL NAME ABBREVIATED)

CALL 24 HOURS BEFORE YOU DIG: 811

NO	REVISION DESCRIPTION	BY	APVD	DATE



PERMIT ISSUE DRAWING

This document version is designed to contain sufficient relevant information for the applicable Permit Review submittal and approval process.

October 2019

DESIGNED/DRAWN:
 H. FANCHER

PROJECT ENGINEER:
 D. APPLIGATE

DESIGN APPROVAL:
 XXX

PROJECT ACCEPTANCE:
 XXX

SCALE:
 AS NOTED

REFERENCE:
 1"

FACILITY NUMBER:
 XXX

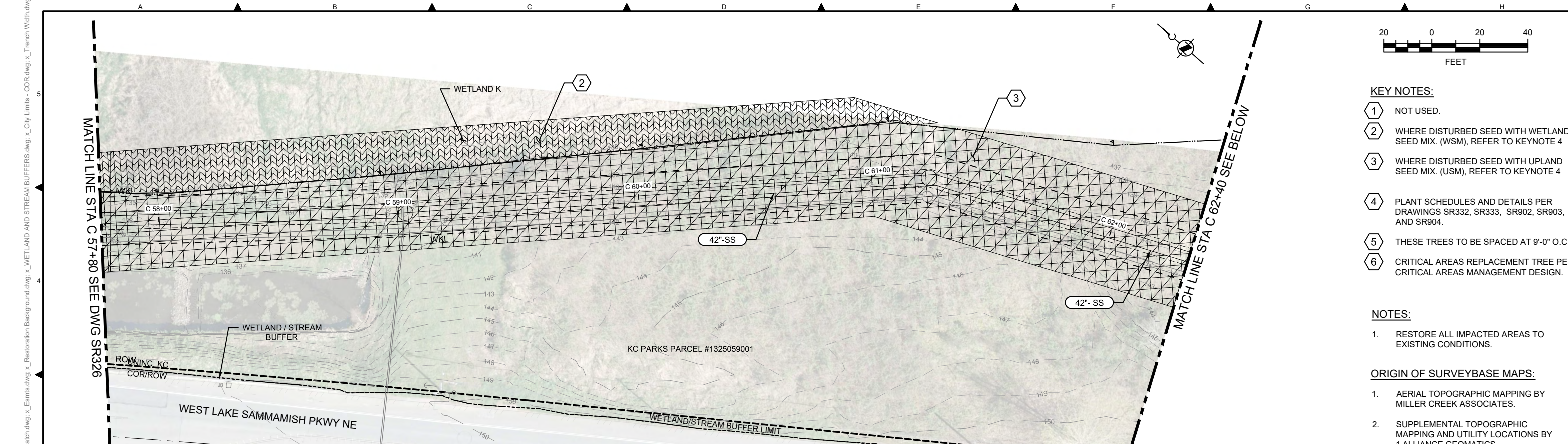
CONTRACT NO:
 E00335E14



DEPARTMENT OF NATURAL RESOURCES & PARKS
 WASTEWATER TREATMENT DIVISION
 LAKE HILLS TRUNK AND NORTHWEST
 LAKE SAMMAMISH INTERCEPTOR PROJECT

**SEGMENT 3
 SITE RESTORATION PLAN
 STA C 47+40 TO STA C 57+80**

DCN:	DATE: September 2019
PROJECT FILE NO:	DRAWING NO: SR326
SHT NO / TOTAL 165 / 357	REV NO: 0



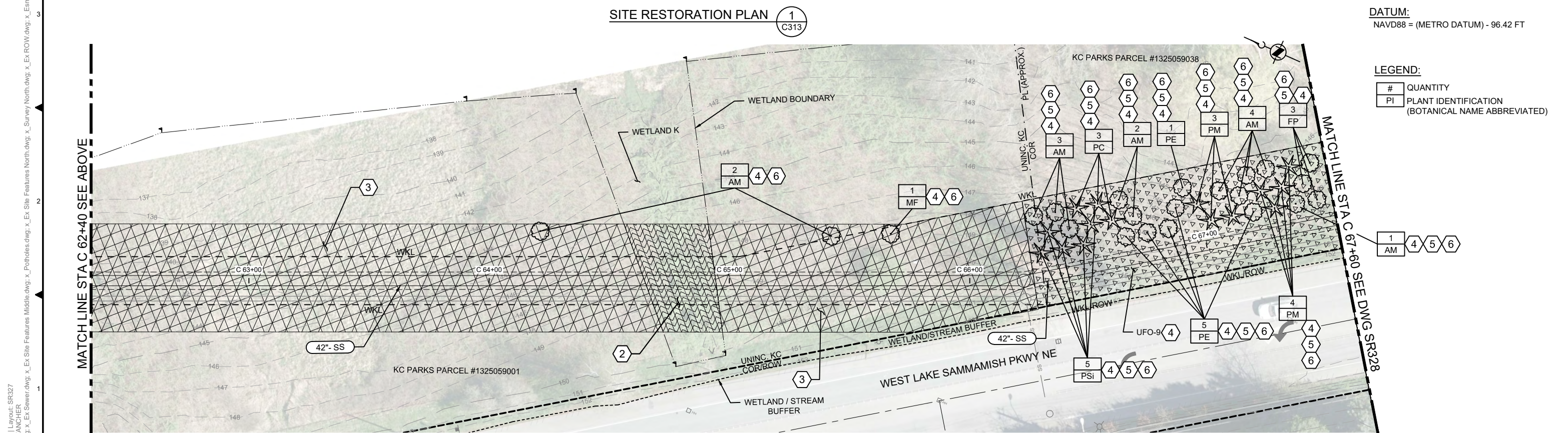
- KEY NOTES:**
- ① NOT USED.
 - ② WHERE DISTURBED SEED WITH WETLAND SEED MIX. (WSM), REFER TO KEYNOTE 4
 - ③ WHERE DISTURBED SEED WITH UPLAND SEED MIX. (USM), REFER TO KEYNOTE 4
 - ④ PLANT SCHEDULES AND DETAILS PER DRAWINGS SR332, SR333, SR902, SR903, AND SR904.
 - ⑤ THESE TREES TO BE SPACED AT 9'-0" O.C.
 - ⑥ CRITICAL AREAS REPLACEMENT TREE PER CRITICAL AREAS MANAGEMENT DESIGN.

- NOTES:**
1. RESTORE ALL IMPACTED AREAS TO EXISTING CONDITIONS.
- ORIGIN OF SURVEYBASE MAPS:**
1. AERIAL TOPOGRAPHIC MAPPING BY MILLER CREEK ASSOCIATES.
 2. SUPPLEMENTAL TOPOGRAPHIC MAPPING AND UTILITY LOCATIONS BY 1 ALLIANCE GEOMATICS.

DATUM:
NAVD88 = (METRO DATUM) - 96.42 FT

LEGEND:

#	QUANTITY
PI	PLANT IDENTIFICATION (BOTANICAL NAME ABBREVIATED)



CALL 24 HOURS BEFORE YOU DIG: 811

NO	REVISION DESCRIPTION	BY	APVD	DATE



PERMIT ISSUE DRAWING

This document version is designed to contain sufficient relevant information for the applicable Permit Review submittal and approval process.

October 2019

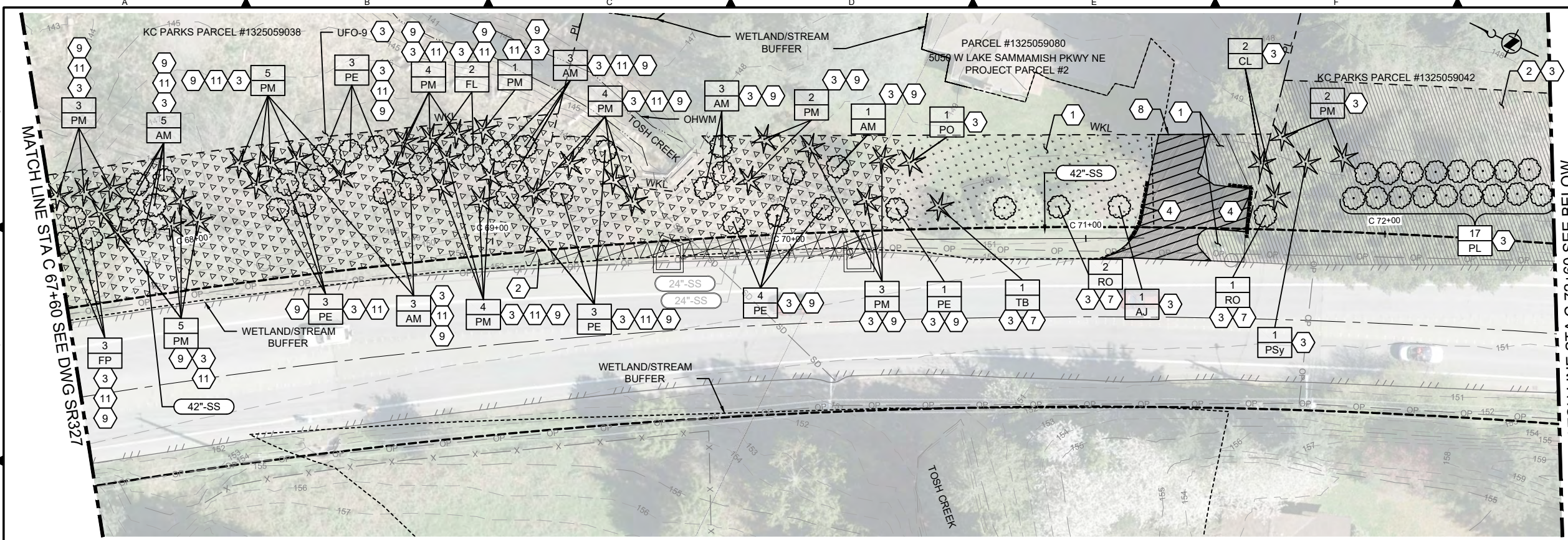
DESIGNED/DRAWN: H. FANCHER	SCALE: AS NOTED
PROJECT ENGINEER: D. APPLIGATE	0 REFERENCE 1"
DESIGN APPROVAL: XXX	FACILITY NUMBER: XXX
PROJECT ACCEPTANCE: XXX	CONTRACT NO: E00335E14

DEPARTMENT OF NATURAL RESOURCES & PARKS
WASTEWATER TREATMENT DIVISION
LAKE HILLS TRUNK AND NORTHWEST
LAKE SAMMAMISH INTERCEPTOR PROJECT

**SEGMENT 3
SITE RESTORATION PLAN
STA C 57+80 TO STA C 67+60**

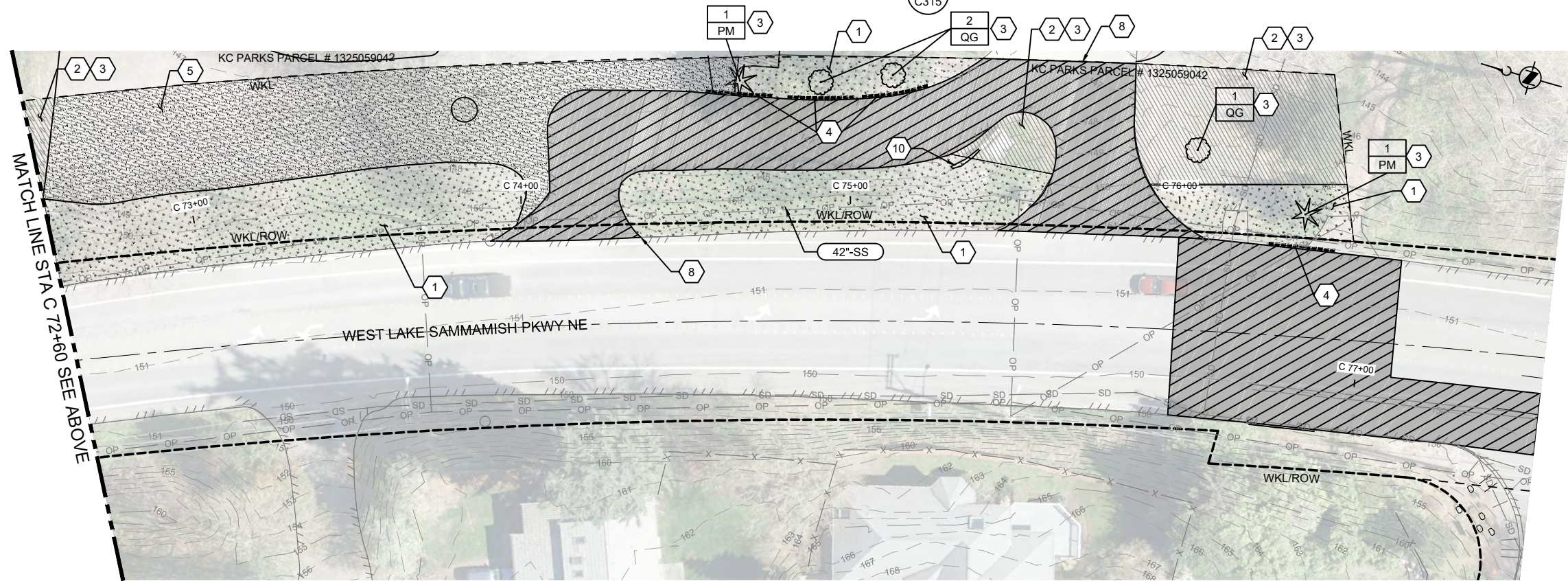
DCN:	DATE: September 2019
PROJECT FILE NO:	DRAWING NO: SR327
SHT NO / TOTAL 166 / 357	REV NO: 0

C:\pwworking\useral2001\75LPLP-SR327.dwg | Layout: SR327
 PLOTTED: Oct 10, 2019 12:38:42pm By: HFANCHER
 XREFS: X:\pwworking\X_Survey\Middle.dwg; X_Ext_Sewer.dwg; X_Ext_Site_Features_North.dwg; X_Ext_Site_Features_Middle.dwg; X_Ext_Site_Features_South.dwg; X_Ext_Survey_North.dwg; X_Ext_Survey_South.dwg; X_City_Limits - COR.dwg; X_Trench_Width.dwg
 IMAGES: 11606.jpg



- KEY NOTES:**
- 1 WHERE DISTURBED, SEED WITH TURF SEED MIX.
 - 2 WHERE DISTURBED, PLANT WITH SHRUBS, GROUND COVER AND PERENNIAL UPLAND RIPARIAN MIX.
 - 3 PLANT SCHEDULES AND DETAILS PER DRAWINGS SR332, SR333, SR902, SR903, AND SR904.
 - 4 ROOT BARRIER. SEE DWG SR902 FOR DETAILS.
 - 5 PROVIDE FILL CLASS TYPE R TO EXTENTS. COMPACTED DEPTH TO MATCH EXISTING DEPTH.
 - 6 IN-KIND REPLACEMENT OF NON-SIGNIFICANT TREE REMOVAL.
 - 7 SHRUB TO BE IN 15 GALLON CONTAINER.
 - 8 MATCH EXISTING AT TIE-IN.
 - 9 CRITICAL AREAS REPLACEMENT TREE PER CRITICAL AREAS MANAGEMENT DESIGN.
 - 10 REPLACE EXISTING CINDER BLOCK LEDGE IN SAME LOCATION IF DAMAGED.
 - 11 THESE TREES TO BE SPACED AT 9'-0" O.C.

SITE RESTORATION PLAN 1
C315



- NOTES:**
1. PAVEMENT PLANING TO BE 2" REMOVE AND REPLACE 3/4" HMA PG 64-22. PAVEMENT PLANING TO FOLLOW COR STD DETAIL 302. PAVEMENT PLANING EXTENTS AROUND TRENCH TO FOLLOW COR STD DETAIL 202.
 2. RESTORATION LIMITS SHOWN ARE ESTIMATED. PHYSICAL LIMITS OF IMPACTED AREAS DURING CONSTRUCTION SHALL BE RESTORED TO EXISTING CONDITIONS.
 3. ALL CHANNELIZATION IMPACTED BY PROJECT CONSTRUCTION SHALL BE REPLACED IN KIND PER COR STD DETAILS 311-319.

- ORIGIN OF SURVEYBASE MAPS:**
1. AERIAL TOPOGRAPHIC MAPPING BY MILLER CREEK ASSOCIATES.
 2. SUPPLEMENTAL TOPOGRAPHIC MAPPING AND UTILITY LOCATIONS BY 1 ALLIANCE GEOMATICS.

DATUM:
NAVD88 = (METRO DATUM) - 96.42 FT

LEGEND:

QUANTITY
PI PLANT IDENTIFICATION (BOTANICAL NAME ABBREVIATED)

SITE RESTORATION PLAN 2
C316

CALL 24 HOURS BEFORE YOU DIG: 811

C:\pwworking\user\2001175\LP-SR328.dwg | Layout: SR328
 PLOTTED: Oct 10, 2019 12:38:59pm. By: HANCIHER
 XREFS: X:Esms.dwg; X:Survey Middle.dwg; X:EX Sewer.dwg; X:EX ROW.dwg; X:Pointies.dwg; X:Esmt Hatch.dwg; X:Vports.dwg; X:Ex Site Features Middle.dwg; X:LH_Border_for_LPP.dwg; X:Tree Preservation Plan.dwg; X_LH_Border_for_SR.dwg; X_Seg 3 SS.dwg; X_Landscape Improvements.dwg
 IMAGES: 1606.jpg; 1607.jpg

NO	REVISION DESCRIPTION	BY	APVD	DATE

PERMIT ISSUE DRAWING

This document version is designed to contain sufficient relevant information for the applicable Permit Review submittal and approval process.

October 2019

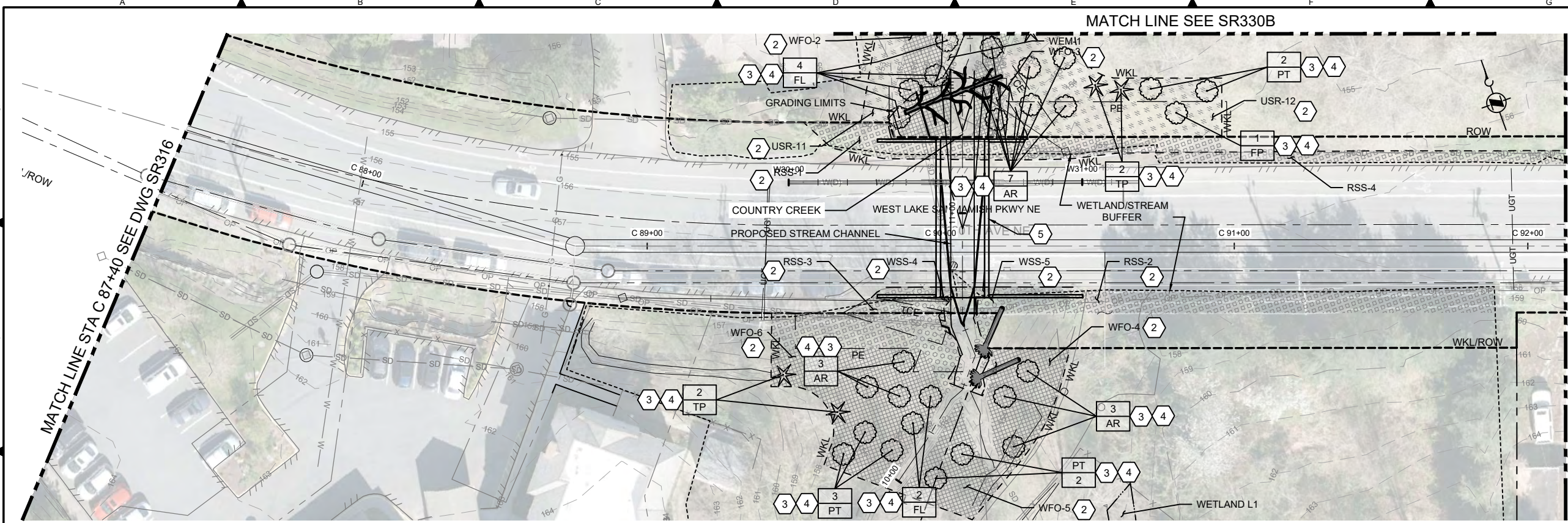
DESIGNED/DRAWN: H. FANCHER	SCALE: AS NOTED
PROJECT ENGINEER: D. APPLIGATE	0 REFERENCE 1"
DESIGN APPROVAL: XXX	FACILITY NUMBER: XXX
PROJECT ACCEPTANCE: XXX	CONTRACT NO: E00335E14

DEPARTMENT OF NATURAL RESOURCES & PARKS
WASTEWATER TREATMENT DIVISION
LAKE HILLS TRUNK AND NORTHWEST
LAKE SAMMAMISH INTERCEPTOR PROJECT

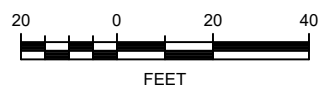
**SEGMENT 3
SITE RESTORATION PLAN
STA C 67+60 TO STA C 77+60**

DCN:	DATE: September 2019
PROJECT FILE NO:	DRAWING NO: SR328
SHT NO / TOTAL 167 / 357	REV NO: 0

C:\pwworking\user\2001175\LP-SR330A.dwg | Layout: SR330A
 XREF: Oct 10 20:19:12:40:49pm By H\FANCHER
 XREF: X_Survey Middle.dwg; X_Ex Sewer.dwg; X_Ex ROW.dwg; X_Ex ROW.dwg; X_Potholes.dwg; X_Esmt Hatch.dwg; X_Vports.dwg; X_Ext Site Features Middle.dwg; X_LH_Border_for_LFP.dwg; X_LH_Border_for_SR.dwg; X_Seg 3 SS.dwg; X_Landscaping Improvements.dwg; X_Esmt.dwg; X_profiles County Creek.dwg
 IMAGES: file06.jpg; file07.jpg; file08.jpg; file09.jpg

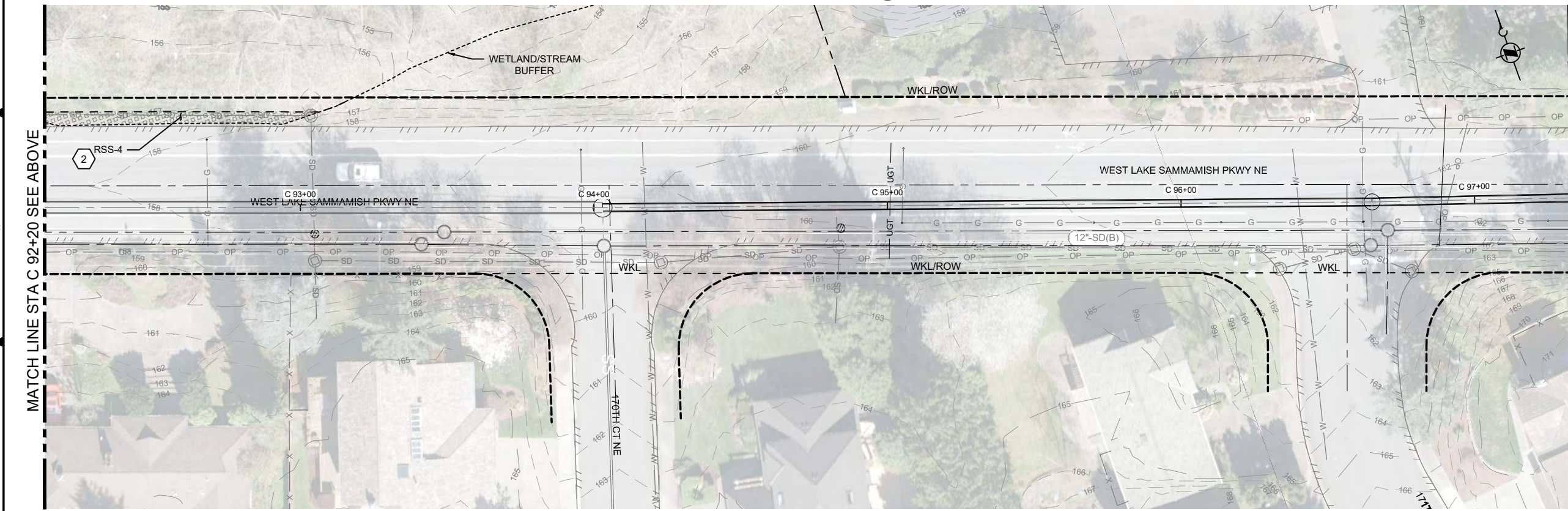


SITE RESTORATION PLAN 1
 C315



- KEY NOTES:**
- 1 NOT USED.
 - 2 WHERE DISTURBED, SEED WITH NOTED WETLAND OR STREAM BUFFER MIX. SEE DWG SR332 FOR PLANTING SCHEDULE.
 - 3 REPLACEMENT TREE AND PLANT SCHEDULE AND DETAILS PER DRAWINGS SR332, SR902, SR903 AND SR904.
 - 4 CRITICAL AREAS REPLACEMENT TREE PER CRITICAL AREAS MANAGEMENT DESIGN.
 - 5 REFER TO C351 FOR CULVERT DESIGN AND GRADING.

- NOTES:**
1. ALL RESTORATION AREAS WILL BE SEEDED. WETLANDS AREAS SHALL BE SEEDED WITH WETLAND SEED MIX AND ALL OTHER AREAS WILL BE SEEDED WITH UPLAND SEED MIX ACCORDING TO 329200.2.01.
 2. MULCH SHALL BE PLACED AROUND TREE AND SHRUB PLANTING ACCORDING TO DETAILS AND ABOVE ORDINARY HIGH WATER.



SITE RESTORATION PLAN 2
 C316

- ORIGIN OF SURVEYBASE MAPS:**
1. AERIAL TOPOGRAPHIC MAPPING BY MILLER CREEK ASSOCIATES.
 2. SUPPLEMENTAL TOPOGRAPHIC MAPPING AND UTILITY LOCATIONS BY 1 ALLIANCE GEOMATICS.

DATUM:
 NAVD88 = (METRO DATUM) - 96.42 FT

- LEGEND:**
- | | |
|----|---|
| # | QUANTITY |
| PI | PLANT IDENTIFICATION (BOTANICAL NAME ABBREVIATED) |

CALL 24 HOURS BEFORE YOU DIG: 811

NO	REVISION DESCRIPTION	BY	APVD	DATE

PERMIT ISSUE DRAWING

This document version is designed to contain sufficient relevant information for the applicable Permit Review submittal and approval process.

October 2019

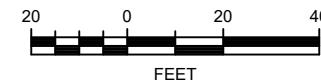
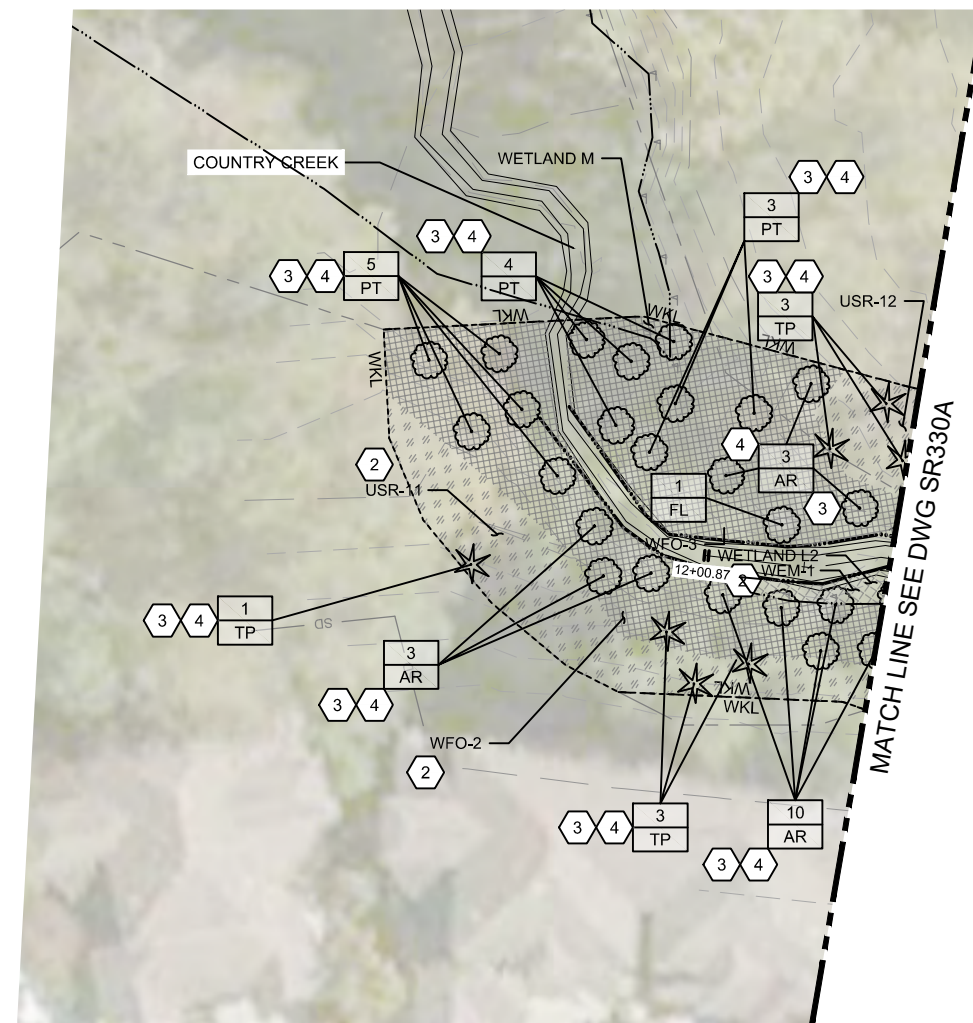
DESIGNED/DRAWN: H. FANCHER	SCALE: AS NOTED
PROJECT ENGINEER: D. APPLIGATE	REFERENCE: 1"
DESIGN APPROVAL: XXX	FACILITY NUMBER: XXX
PROJECT ACCEPTANCE: XXX	CONTRACT NO: E00335E14



DEPARTMENT OF NATURAL RESOURCES & PARKS
 WASTEWATER TREATMENT DIVISION
 LAKE HILLS TRUNK AND NORTHWEST
 LAKE SAMMAMISH INTERCEPTOR PROJECT

**SEGMENT 3
 SITE RESTORATION PLAN
 STA C 87+40 TO STA C 97+40**

DCN:	DATE: September 2019
PROJECT FILE NO:	DRAWING NO: SR330A
SHT NO / TOTAL 167 / 357	REV NO: 0



KEY NOTES:

- 1 NOT USED.
- 2 WHERE DISTURBED, SEED WITH NOTED WETLAND OR STREAM BUFFER MIX. SEE DWG SR332 FOR PLANTING SCHEDULE.
- 3 REPLACEMENT TREE AND PLANT SCHEDULE AND DETAILS PER DRAWINGS SR332, SR902, SR903 AND SR904.
- 4 CRITICAL AREAS REPLACEMENT TREE PER CRITICAL AREAS MANAGEMENT DESIGN.

NOTES:

1. RESTORATION LIMITS SHOWN ARE ESTIMATED. PHYSICAL LIMITS OF IMPACTED AREAS DURING CONSTRUCTION SHALL BE RESTORED TO EXISTING CONDITIONS.
2. ALL RESTORATION AREAS WILL BE SEEDED. WETLANDS AREAS SHALL BE SEEDED WITH WETLAND SEED MIX AND ALL OTHER AREAS WILL BE SEEDED WITH UPLAND SEED MIX ACCORDING TO 329200.2.01.
3. MULCH SHALL BE PLACED AROUND TREE AND SHRUB PLANTING ACCORDING TO DETAILS AND ABOVE ORDINARY HIGH WATER.

ORIGIN OF SURVEYBASE MAPS:

1. AERIAL TOPOGRAPHIC MAPPING BY MILLER CREEK ASSOCIATES.
2. SUPPLEMENTAL TOPOGRAPHIC MAPPING AND UTILITY LOCATIONS BY 1 ALLIANCE GEOMATICS.

DATUM:

NAVD88 = (METRO DATUM) - 96.42 FT

LEGEND:

#	QUANTITY
PI	PLANT IDENTIFICATION (BOTANICAL NAME ABBREVIATED)

SITE RESTORATION PLAN

1
C315

CALL 24 HOURS BEFORE YOU DIG: 811

NO	REVISION DESCRIPTION	BY	APVD	DATE



PERMIT ISSUE DRAWING

This document version is designed to contain sufficient relevant information for the applicable Permit Review submittal and approval process.

October 2019

DESIGNED/DRAWN: H. FANCHER	SCALE: AS NOTED
PROJECT ENGINEER: D. APPLIGATE	REFERENCE:
DESIGN APPROVAL: XXX	FACILITY NUMBER: XXX
PROJECT ACCEPTANCE: XXX	CONTRACT NO: E00335E14



DEPARTMENT OF NATURAL RESOURCES & PARKS
WASTEWATER TREATMENT DIVISION
LAKE HILLS TRUNK AND NORTHWEST
LAKE SAMMAMISH INTERCEPTOR PROJECT

**SEGMENT 3
SITE RESTORATION PLAN
COUNTRY CREEK**

DCN:	DATE: September 2019
PROJECT FILE NO:	
DRAWING NO: SR330B	
SHT NO / TOTAL 167 / 357	REV NO: 0

C:\pwworking\user\al20017\5\LP-SR330B.dwg | Layout: SR330B
 PLOTTED: Oct 10, 2019 12:41:53pm By: HFANCHER
 XREFS: x_Estms.dwg; x_Survey_Middle.dwg; x_Ex_Sewer.dwg; x_Ex_ROW.dwg; x_Potholes.dwg; x_Esmt_Hatch.dwg; x_LH_Border_for_LPP.dwg; x_Tree_Preservation_Plan.dwg; x_LH_Border_for_SR.dwg; x_Seg 3 SS.dwg; x_Landscape_Improvements.dwg; x_profiles_Country_Creek.dwg
 IMAGES: 11e06.jpg; 11e07.jpg; 11e08.jpg; 11e09.jpg

SEGMENT 3 WETLAND, STREAM, AND BUFFER PLANT SCHEDULE

STRATUM	KEY	BOTANICAL NAME	COMMON NAME	INDICATOR STATUS	SIZE	SPACING**	TOTAL QTY	PLANT ZONE QUANTITIES																			SEED ZONE QUANTITIES													
								USR-6	USR-7	USR-8	USR-9	USR-10	USR-11	USR-12	UFO-1	UFO-2	UFO-3	UFO-4	UFO-5	UFO-6	UFO-7	UFO-8	UFO-9	WEM-1	WSS-3	WSS-4	WSS-5	WFO-1	WFO-2	WFO-3	WFO-4	WFO-5	WFO-6	*** RSS-1	*** RSS-2	*** RSS-3	*** RSS-4	WSM	USM	
TREE																																								
DECIDUOUS	AM	ACER MACROPHYLLUM	BIG LEAF MAPLE	FACU	5 GAL.	SEE DWG., MIN. 15' O.C.	45																																	
	AR	ALNUS RUBRA	RED ALDER	FAC	5 GAL.	SEE DWG., MIN. 15' O.C.	32																				3													
	FP	FRANGULA PURSHIANA	CASCARA	FAC	5 GAL.	SEE DWG., MIN. 15' O.C.	16	1																			1													
	FL	FRAXINUS LATIFOLIA	OREGON ASH	FACW	5 GAL.	SEE DWG., MIN. 15' O.C.	41	2																																
	MF	MALUS FUSCA	PACIFIC CRABAPPLE	FACW	5 GAL.	SEE DWG., MIN. 15' O.C.	41	2																			13													
	PT	POPULUS TRICHOCARPA	BLACK COTTONWOOD	FAC	5 GAL.	SEE DWG., MIN. 15' O.C.	20																				2													
	PE	PRUNUS EMARGINATA	BITTER CHERRY	FACU	5 GAL.	SEE DWG., MIN. 15' O.C.	33	2																			3													
	SL	SALIX LUCIDA	PACIFIC WILLOW	FACW	5 GAL.	SEE DWG., MIN. 15' O.C.	15																																	
CONIFER	AG	ABIES GRANDIS	GRAND FIR	FACU	5 GAL.	SEE DWG., MIN. 15' O.C.	2																																	
	PSI	PICEA SITCHENSIS	SITKA SPRUCE	FAC	5 GAL.	SEE DWG., MIN. 15' O.C.	19	3																																
	PC	PINUS CONTORTA	SHORE PINE	FAC	5 GAL.	SEE DWG., MIN. 15' O.C.	3																																	
	PM	PSEUDOTSUGA MENZIESII	DOUGLAS FIR	FACU	5 GAL.	SEE DWG., MIN. 15' O.C.	87	4																			9													
	TP	THUJA PLICATA	WESTERN RED CEDAR	FAC	5 GAL.	SEE DWG., MIN. 15' O.C.	36																				1													
SHRUB																																								
ACER CIRCINATUM								VINE MAPLE		FAC	2 GAL.	5' O.C.	98																											
AMELANCHIER ALNIFOLIA								SERVICEBERRY		FACU	2 GAL.	5' O.C.	228	69																										
CORNUS SERICEA								REDOsier DOGWOOD		FACW	2 GAL.	5' O.C.	319																											
CORYLUS CORNUTA								BEAKED HAZELNUT		FACU	2 GAL.	5' O.C.	155																											
GAULTHERIA SHALLON								SALAL		FACU	1 GAL.	2.5' O.C.	273	9	17																									
HOLODISCUS DISCOLOR								OCEANSPRAY		FACU	2 GAL.	5' O.C.	228	69	5	7	4	4	4	19	6	45																		
LONICERA INVOLUCRATA								BLACK TWINBERRY		FAC	2 GAL.	5' O.C.	241	69																										
MAHONIA NERVOSA								LOW OREGON GRAPE		FACU	1 GAL.	2.5' O.C.	636	9	17	12	14	21							25	20	200	14	6	24	27	9	7	18	55	70	38	50		
OEMLERIA CERASIFORMIS								INDIAN PLUM		FACU	2 GAL.	5' O.C.	67	4	5							4	4	6	45															
PHILADELPHUS LEWISII								MOCK ORANGE		NL	2 GAL.	5' O.C.	224	69																										
PHYSOCARPUS CAPITATUS								PACIFIC NINEBARK		FACW	2 GAL.	5' O.C.	280	69																										
RIBES DIVARICATUM								BLACK GOOSEBERRY		FAC	2 GAL.	5' O.C.	284	69																										
ROSA NUTKANA								NOOTKA ROSE		FAC	2 GAL.	5' O.C.	341	69																										
ROSA PISOCARPA								SWAMP ROSE		FAC	2 GAL.	5' O.C.	281	69																										
RUBUS PARVIFLORUS								THIMBLEBERRY		FACU	2 GAL.	5' O.C.	271	69	7							5	5	19	6	45	23	27	65											
RUBUS SPECTABILIS								SALMONBERRY		FAC	2 GAL.	5' O.C.	115																											
SALIX GEYERIANA								GEYER WILLOW		FACW	5' LIVE STAKE	5' O.C.	221																											
SALIX LUCIDA								PACIFIC WILLOW		FACW	5' LIVE STAKE	5' O.C.	134																											
SALIX SITCHENSIS								SITKA WILLOW		FACW	5' LIVE STAKE	5' O.C.	218																											
SAMBUCUS RACEMOSA								RED ELDERBERRY		FACU	2 GAL.	5' O.C.	244	69																										
SYMPHORICARPOS ALBUS								SNOWBERRY		FACU	2 GAL.	5' O.C.	288	4	5	7	3	5	5	19	6	9	6	6	45	22	27	65						12	15	8	11			
GROUNDCOVER																																								
ARCTOSTAPHYLOS UVA-URSI								KINNIKINICK		FACU	1 GAL.	2.5' O.C.	4563	1540																										
ARUNCUS DIOICUS								GOATS BEARD		FACU	1 GAL.	2.5' O.C.	520	250	3	5							7	7																
CAREX OBNUPTA								SLOUGH SEDGE		OBL	1 GAL.	2.5' O.C.	52																											
CHAMERION ANGSTIFOLIUM								FIREWEED		NL	1 GAL.	2.5' O.C.	553																											
DESCHAMPSIA CEPITOSA								TUFTED HAIRGRASS		FACW	1 GAL.	2.5' O.C.	52																											
JUNCUS EFFUSUS VAR PACIFICUS								PACIFIC RUSH		OBL	1 GAL.	2.5' O.C.	52																											
JUNCUS TENUIS								POVERTY RUSH		FAC	1 GAL.	2.5' O.C.	52																											
POLYSTICHUM MUNITUM								SWORD FERN		FACU	1 GAL.	2.5' O.C.	2161	250	9	17							12	13	220	19	25	50	20	600	176	250	500							

** TREE SPACING IS ADJUSTED TO 9' O.C. WHERE NOTED ON DRAWINGS SR325 - SR328, AND SR330B. THIS REFLECTS KING COUNTY CRITICAL AREAS MITIGATION GUIDELINES FOR FORESTED WETLANDS AND BUFFERS.
 *** RSS= ROADSIDE SHRUB PLANTING ZONE. THE RSS ZONE FALL WITHIN STREAM AND WETLAND BUFFERS WITHIN THE ROAD RIGHT OF WAY. THIS ZONE INCORPORATES LOW GROWING NATIVE SHRUBS.

SEGMENT 3 WETLAND/STREAM BUFFER PLANTING SCHEDULE

1 VARIES

NOTE:
 1. REFER TO SR333 FOR ADDITIONAL PLANTING SCHEDULES
 2. PROVIDE TRIANGULAR O.C. SPACING UNLESS OTHERWISE NOTED.

CALL 24 HOURS BEFORE YOU DIG: 811

G:\PROJECTS\King County Lake Hills-Sammamish Interceptor\Drawings\CAD\Projectwise\Permit - Planting Details\seg_3.dwg | Layout: LP332
 PLOTTED: Sep 17, 2019 04:26:50pm By jasonf
 XREFS: x_LH_Border.dwg
 IMAGES:

NO	REVISION DESCRIPTION	BY	APVD	DATE

PERMIT ISSUE DRAWING

This document version is designed to contain sufficient relevant information for the applicable Permit Review submittal and approval process.

October 2019

DESIGNED/DRAWN: J. FRISTENSKY	SCALE: AS NOTED
PROJECT ENGINEER: G. BROWER	0 REFERENCE 1"
DESIGN APPROVAL: XXX	FACILITY NUMBER: XXX
PROJECT ACCEPTANCE: XXX	CONTRACT NO: E00335E14



DEPARTMENT OF NATURAL RESOURCES & PARKS
 WASTEWATER TREATMENT DIVISION
 LAKE HILLS TRUNK AND NORTHWEST
 LAKE SAMMAMISH INTERCEPTOR PROJECT

**SEGMENT 3
 PLANTING SCHEDULE 1**

DCN:	DATE: September 2019
PROJECT FILE NO:	
DRAWING NO: SR332	
SHT NO / TOTAL 181 / 357	REV NO:

POLLINATOR MIX:

RANDOMLY MIX THE FOLLOWING SPECIES IN GROUPS SIMILAR TO DETAIL 4, DWG SR902 IN THE QTY. PROPORTIONS SPECIFIED BELOW:

BOTANICAL NAME	COMMON NAME	QTY. (%)	SIZE	ROOT
SHRUBS - SPACE AT 3'-0" O.C.				
CORNUS SERICEA	REDTWIG DOGWOOD	5%	30"HT	#2 CONT.
HOLODISCUS DISCOLOR	OCEANSPRAY	5%	18" HT	#1 CONT.
LONICERA INVOLUCRATA	BLACK TWINBERRY	5%	30" HT.	#2 CONT.
RIBES SANGUINEUM	FLOWERING CURRANT	5%	18" HT	#1 CONT.
ROSA NUTKANA	NOOTKA ROSE	4%	18" HT	#1 CONT.
RUBUS PARVAFLORIS	THIMBLEBERRY	5%	18" HT	#1 CONT.
RUBUS SPECTABILIS	SALMONBERRY	2%	18" HT	#1 CONT.
SALIX SCOULERIANA	SCOULER'S WILLOW	5%	30" HT	#2 CONT.
SPIREA DOUGLASII	DOUGLAS SPIREA	2%	12" HT	#1 CONT.
SYMPHORICARPOS ALBUS	SNOWBERRY	2%	18" HT	#1 CONT.
GROUNDCOVER AND PERENNIALS - SPACE AT 18" O.C.				
RANDOMLY MIX THE FOLLOWING SPECIES IN GROUPS IN THE QTY. PROPORTIONS SPECIFIED BELOW:				
ARCTOSTAPHYLOS UVA-URSI	KINNIKINNICK	10%	6" HT	#1 CONT.
ECHINACEA PURPUREA	PURPLE CONEFLOWER	10%	6" HT	#1 CONT.
FRAGARIA SP.	STRAWBERRY	10%	6" HT	#1 CONT.
GAULTHERIA SHALLON	SALAL	10%	6" HT	#1 CONT.
RUDEBECKIA HIRTA	BLACK-EYED SUSAN	10%	6" HT	#1 CONT.
SALVIA OFFICINALIS	COMMON SAGE	10%	6" HT	#1 CONT.

UPLAND RIPARIAN MIX:

RANDOMLY MIX THE FOLLOWING SPECIES IN GROUPS SIMILAR TO DETAIL 4, DWG SR902 IN THE QTY. PROPORTIONS SPECIFIED BELOW:

BOTANICAL NAME	COMMON NAME	QTY. (%)	SIZE	ROOT
SHRUBS - SPACE AT 3'-0" O.C.				
CORNUS SERICEA	REDTWIG DOGWOOD	8%	30"HT	#2 CONT.
LONICERA INVOLUCRATA	BLACK TWINBERRY	5%	30" HT.	#2 CONT.
MAHONIA AQUIFOLIUM	OREGON GRAPE	5%	18" HT	#1 CONT.
PHILADELPHUS LEWISII	MOCK ORANGE	2%	12" HT	#1 CONT.
PHYSOCARPUS CAPITATUS	PACIFIC NINEBARK	2%	30" HT	#2 CONT.
RIBES SANGUINEUM	FLOWERING CURRANT	5%	18" HT	#1 CONT.
ROSA NUTKANA	NOOTKA ROSE	4%	18" HT	#1 CONT.
RUBUS PARVAFLORIS	THIMBLEBERRY	5%	18" HT	#1 CONT.
RUBUS SPECTABILIS	SALMONBERRY	2%	18" HT	#1 CONT.
SYMPHORICARPOS ALBUS	SNOWBERRY	2%	18" HT	#1 CONT.
GROUNDCOVER AND PERENNIALS - SPACE AT 18" O.C.				
RANDOMLY MIX THE FOLLOWING SPECIES IN GROUPS IN THE QTY. PROPORTIONS SPECIFIED BELOW:				
ARCTOSTAPHYLOS UVA-URSI	KINNIKINNICK	15%	6" HT	#1 CONT.
FRAGARIA SP.	STRAWBERRY	15%	6" HT	#1 CONT.
GAULTHERIA SHALLON	SALAL	15%	6" HT	#1 CONT.
VANCOUVERIA HEXANDRA	INSIDE OUT FLOWER	15%	6" HT	#1 CONT.

SEGMENT 3 SHRUB, GROUNDCOVER, AND PERENNIAL PLANTING SCHEDULE

3 VARIES

CALL 24 HOURS BEFORE YOU DIG: 811

SEGMENT 3 TREE REPLACEMENT SCHEDULE: C.O.R. (NON-CRITICAL AREAS)

	KEY	QTY.	BOTANICAL NAME	COMMON NAME	SIZE	ROOT	SPACING	NATIVE	NON-NATIVE	ADAPTIVE	DROUGHT TOLERANT	
DECIDUOUS	ACa	1	ACER CAMPESTRE	HEDGE MAPLE	2.5" CAL. MIN.	B&B	20' O.C.		x		x	
	AJ	2	ACER JAPONICA	AMUR MAPLE	2.5" CAL. MIN.	B&B	20' O.C.		x			
	AR	6***	ACER RUBRUM	RED MAPLE	2.5" CAL. MIN.	B&B	20' O.C.		x			
	BN	2	BETULA NIGRA	RIVER BIRCH	8' MIN-HT. 2.5" CAL. MIN., 3 STEM MIN.	B&B	25' O.C.		x			
	CC	5	CERCIS CANADENSIS	EASTERN REDBUD	2.5" CAL. MIN.	B&B	30' O.C.		x	x	x	
	FL	12	FRAXINUS LATIFOLIA	OREGON ASH	2.5" CAL. MIN.	B&B	20' O.C.		x			
	GT	4**	GLEDITSIA TRIACANTHOS VAR. INERMIS	SUNBURST HONEY LOCUST	2.5" CAL. MIN.	B&B	25' O.C.		x			
	HI	2	HAMAMELIS X INTERMEDIA 'ARNOLD'S PROMISE'	WITCH HAZEL	8' MIN-HT. 2.5" CAL. MIN., 3 STEM MIN.	B&B	10'-15' O.C.		x			
	LS	6	LIQUIDAMBAR STYRACIFLUA	AMERICAN SWEETGUM	2.5" CAL. MIN.	B&B	30' O.C.		x			
	PS	7***	PRUNUS SERRULATA 'KWANZAN'	FLOWERING CHERRY	2.5" CAL. MIN.	B&B	20'-25' O.C.		x			
	QG	3	QUERCUS GARRYANA	GARRY OAK	2.5" CAL. MIN.	B&B	30' O.C.	x			x	
	EVERGREEN	CD	1	CEDRUS DEODORA	DEODAR CEDAR	8' HT MIN.	B&B	25' O.C.		x		
		CL	2	CHAMAECYPARIS LAWSONIANA	LAWSON CYPRESS	8' HT MIN.	B&B	15'-20' O.C.		x	x	x
CLe		2	CUPRESSUS X LEYLANDII	LEYLAND CYPRESS	8' HT MIN.	B&B	30' O.C.		x			
PL		17*	PRUNUS LUSITANICA	PORTUGUESE CHERRY LAUREL	15 GAL.	B&B	PER PLANS		x	x		
PM		4	PSEUDOTSUGA MENZIESII	DOUGLAS FIR	8' HT MIN.	B&B	20' O.C.	x			x	
PO		1	PICEA ORIENTALIS	ORIENTAL SPRUCE	8' HT MIN.	B&B	25' O.C.		x			
PSy		1	PINUS SYLVESTRIS	SCOTS PINE	8' HT MIN.	B&B	20' O.C.	x			x	
RO		3*	RHODODENDRON 'VERY BERRY'	VERY BERRY RHODODENDRON	15 GAL.	B&B	PER PLANS		x	x		
TB		1*	TAXUS BACCATA	ENGLISH YEW	15 GAL.	B&B	PER PLANS		x			
TP		3	THUJA PLICATA	WESTERN RED CEDAR	8' HT MIN.	B&B	25'-30' O.C.	x				

NOTE: SEE DWG 4/SR333 FOR HISTORIC TREE REPLACEMENT PLANTING SCHEDULE. SEE DWG 1/SR332 FOR PLANTING SCHEDULE WITHIN WETLANDS AND WETLAND/STREAM BUFFERS.

* IN-KIND REPLACEMENTS OF (NON-SIGNIFICANT REMOVALS, <6"DBH) FOUND ON SR328, AS CAN BE DEFINED AS LARGE SHRUB OR SMALL TREE. THESE TREES ARE NOT REFLECTED IN REPLACEMENT DELTA CHART.

** (2) ARE IN-KIND REPLACEMENTS (NON-SIGNIFICANT REMOVALS, <6" DBH) FOUND ON DWG 1/SR321 AND KEYNOTE 8. THESE (2) TREES ARE NOT REFLECTED IN REPLACEMENT DELTA CHART.

***SIX PRUNUS SERRULATA AND FIVE ACER RUBRUM ARE REPLACEMENT TREES FOR SIGNIFICANT REMOVALS IN CITY OF REDMOND PUBLIC RIGHT-OF-WAY. THESE ELEVEN (11) TREE REMOVALS ARE NOT REFLECTED IN THE COUNTS NOTED IN "SEGMENT 3 TREE REMOVAL AND REPLACEMENT" CHART BELOW.

SEGMENT 3 TREE REPLACEMENT PLANTING SCHEDULE

1 VARIES

SEGMENT 3 TREE REMOVAL AND REPLACEMENT: C.O.R. (NON-CRITICAL AREAS, NON-ROW)

	SIGNIFICANT TREE REMOVAL (1:1)	LANDMARK TREE REMOVAL (3:1)	ON SITE REPLACEMENT	TREE BANK REPLACEMENT	REQUIRED REPLACEMENT	ACTUAL REPLACEMENT	DELTA
TOTAL	45**	2	51	0	51**	51	0

**THE COUNT IN THIS CHART DOES NOT REFLECT THE REMOVAL OF ELEVEN (11) SIGNIFICANT TREES IN CITY OF REDMOND PUBLIC RIGHT-OF-WAY. THE ELEVEN (11) REPLACEMENT TREES ARE NOTED IN THE "SEGMENT 3 TREE REPLACEMENT SCHEDULE" ABOVE.

SEGMENT 3 TREE REMOVAL AND REPLACEMENT DELTA CHART

2 VARIES

HISTORICAL TREE REPLACEMENT PLANTING SCHEDULE (K.C. PROPERTY)

	KEY	QTY.	BOTANICAL NAME	COMMON NAME	SIZE	ROOT	NOTES
REMOVE	PoAl	4	POPULUS ALBA	WHITE POPLAR	VARIES, ALL LANDMARK	B&B	TREE ID # 1477, 1478, 1479, 1480
REPLACE (1:1)	PoAl	4	POPULUS ALBA	WHITE POPLAR	2.5" CAL. MIN	B&B	SPECIES REQUIRES NURSERY PROPAGATION

NOTE: REFER TO TPP11 AND SR325 FOR EXISTING LOCATION AND REPLACEMENT LOCATION.

HISTORICAL TREE REPLACEMENT PLANTING SCHEDULE

4 VARIES

G:\PROJECT\King County Lake Hills-Sammamish Interceptor\Drawings\CAD\Projectwise\Permit Drawings\Sheet files\Landscape Permit - Planting Details_seg.3.dwg | Layout: LP333 PLOTTED: Sep 17, 2019 04:26:52pm By Jasonf XREFS: x_LH_Border.dwg IMAGES:

NO	REVISION DESCRIPTION	BY	APVD	DATE

1721 8th Ave N
Seattle, WA 98109
206.325.6677
bergerpartnership.com

PERMIT ISSUE DRAWING

This document version is designed to contain sufficient relevant information for the applicable Permit Review submittal and approval process.

October 2019

DESIGNED/DRAWN:
J. FRISTENSKY

SCALE:
AS NOTED

PROJECT ENGINEER:
G. BROWER

0 REFERENCE 1"

DESIGN APPROVAL:
XXX

FACILITY NUMBER:
XXX

PROJECT ACCEPTANCE:
XXX

CONTRACT NO:
E00335E14

DEPARTMENT OF NATURAL RESOURCES & PARKS
WASTEWATER TREATMENT DIVISION
LAKE HILLS TRUNK AND NORTHWEST
LAKE SAMMAMISH INTERCEPTOR PROJECT

**SEGMENT 3
PLANTING SCHEDULE 2**

DCN:

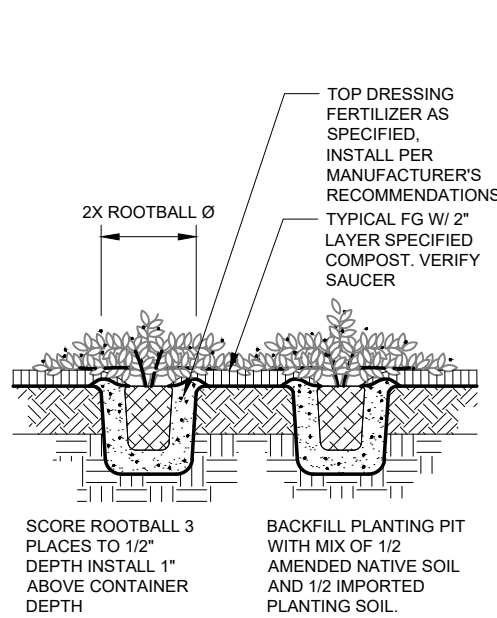
DATE:
September 2019

PROJECT FILE NO:

DRAWING NO:
SR333

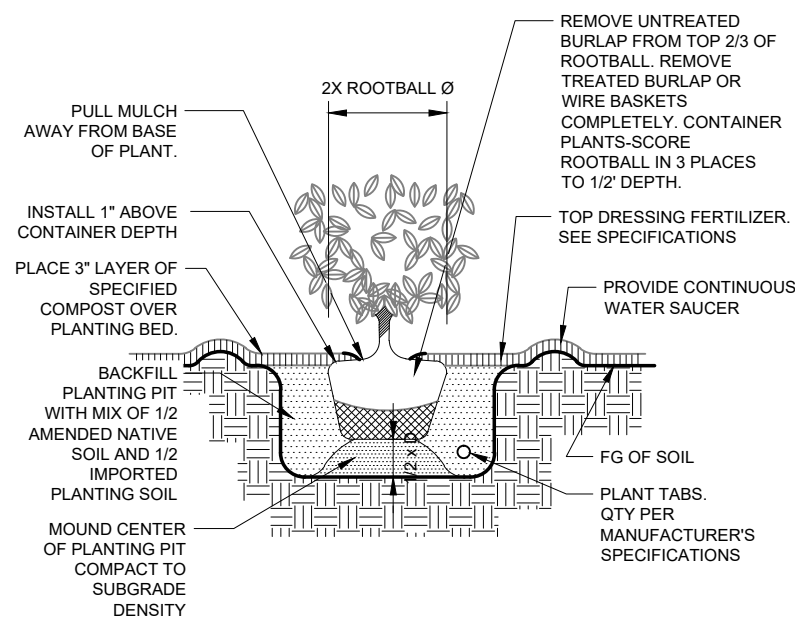
SHT NO / TOTAL
182 / 357

REV NO:



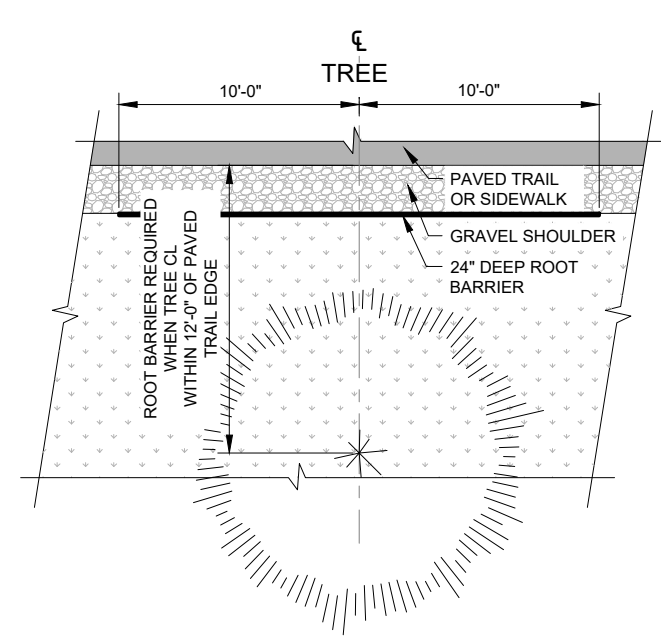
GROUNDCOVER PLANTING
SCALE: NTS

1
VARIES



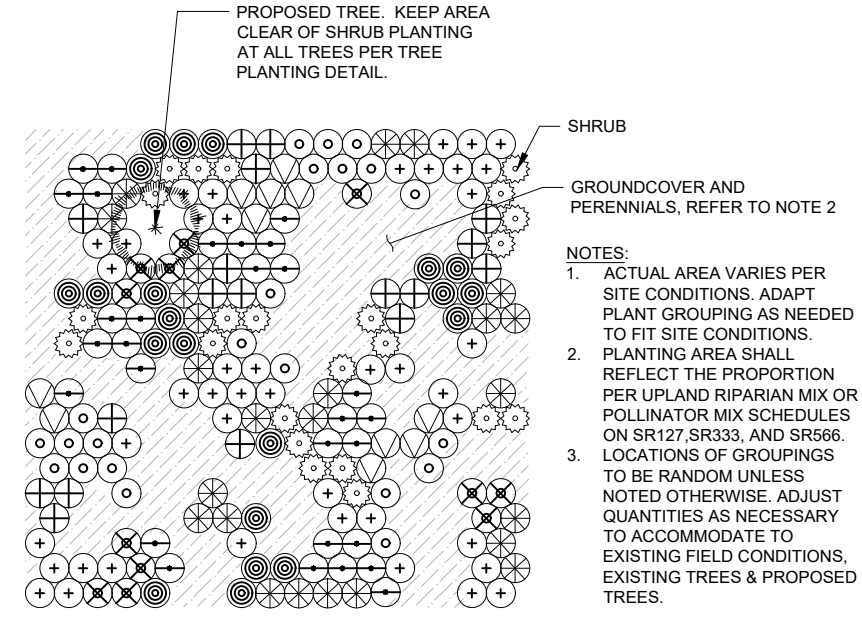
SHRUB PLANTING
SCALE: NTS

2
VARIES



ROOT BARRIER
SCALE: 1/4" = 1'-0"

3
VARIES

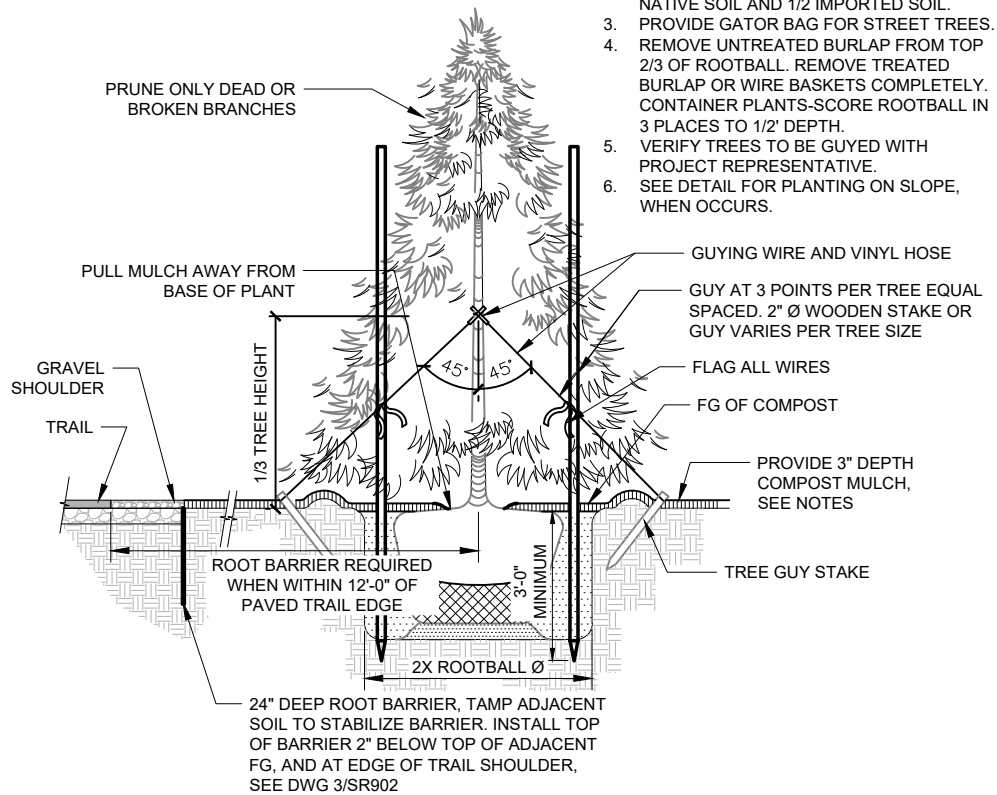


PLANTING FOR SHRUBS, GROUNDCOVER, & PERENNIAL MIXES
SCALE: NTS

4
VARIES

NOTES:

- WHERE TREES OCCUR IN TURF AREAS, PROVIDE 3'-4" DIA. COMPOST CIRCLE.
- BACKFILL PLANTING PIT WITH MIX OF 1/2 NATIVE SOIL AND 1/2 IMPORTED SOIL.
- PROVIDE GATOR BAG FOR STREET TREES.
- REMOVE UNTREATED BURLAP FROM TOP 2/3 OF ROOTBALL. REMOVE TREATED BURLAP OR WIRE BASKETS COMPLETELY. CONTAINER PLANTS-SCORE ROOTBALL IN 3 PLACES TO 1/2" DEPTH.
- VERIFY TREES TO BE GUYED WITH PROJECT REPRESENTATIVE.
- SEE DETAIL FOR PLANTING ON SLOPE, WHEN OCCURS.

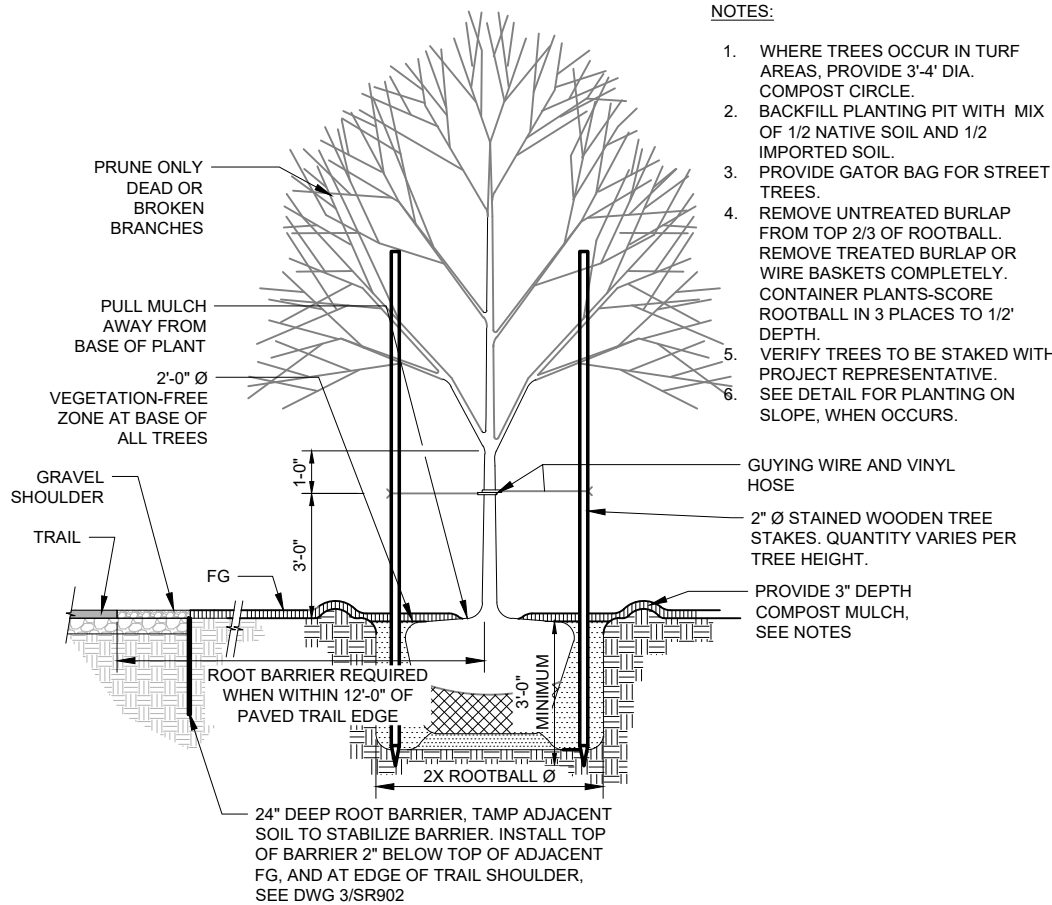


EVERGREEN TREE PLANTING AND GUYING
SCALE: NTS

5
VARIES

NOTES:

- WHERE TREES OCCUR IN TURF AREAS, PROVIDE 3'-4" DIA. COMPOST CIRCLE.
- BACKFILL PLANTING PIT WITH MIX OF 1/2 NATIVE SOIL AND 1/2 IMPORTED SOIL.
- PROVIDE GATOR BAG FOR STREET TREES.
- REMOVE UNTREATED BURLAP FROM TOP 2/3 OF ROOTBALL. REMOVE TREATED BURLAP OR WIRE BASKETS COMPLETELY. CONTAINER PLANTS-SCORE ROOTBALL IN 3 PLACES TO 1/2" DEPTH.
- VERIFY TREES TO BE STAKED WITH PROJECT REPRESENTATIVE. SEE DETAIL FOR PLANTING ON SLOPE, WHEN OCCURS.

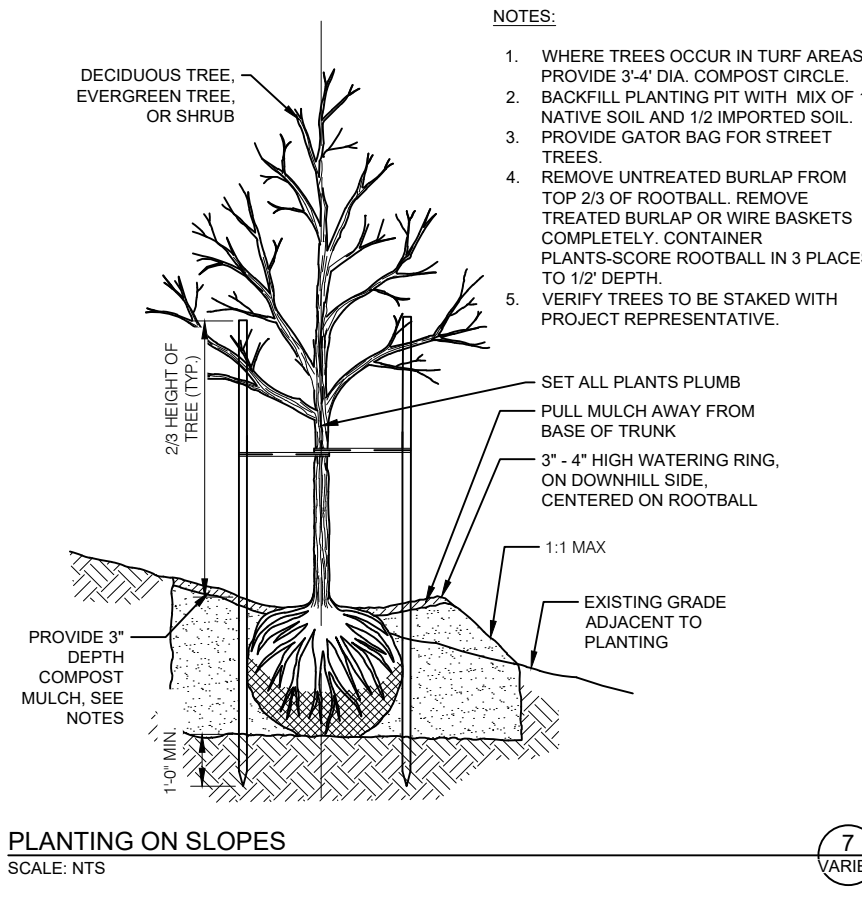


DECIDUOUS TREE PLANTING AND STAKING
SCALE: NTS

6
VARIES

NOTES:

- WHERE TREES OCCUR IN TURF AREAS, PROVIDE 3'-4" DIA. COMPOST CIRCLE.
- BACKFILL PLANTING PIT WITH MIX OF 1/2 NATIVE SOIL AND 1/2 IMPORTED SOIL.
- PROVIDE GATOR BAG FOR STREET TREES.
- REMOVE UNTREATED BURLAP FROM TOP 2/3 OF ROOTBALL. REMOVE TREATED BURLAP OR WIRE BASKETS COMPLETELY. CONTAINER PLANTS-SCORE ROOTBALL IN 3 PLACES TO 1/2" DEPTH.
- VERIFY TREES TO BE STAKED WITH PROJECT REPRESENTATIVE.



PLANTING ON SLOPES
SCALE: NTS

7
VARIES

NOTE:

REFER TO DWG SR903 FOR DETAILS ASSOCIATED WITH WETLAND AND WETLAND/STREAM BUFFER PLANTINGS.

CALL 24 HOURS BEFORE YOU DIG: 811

NO	REVISION DESCRIPTION	BY	APVD	DATE

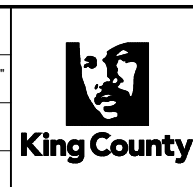


PERMIT ISSUE DRAWING

This document version is designed to contain sufficient relevant information for the applicable Permit Review submittal and approval process.

October 2019

DESIGNED/DRAWN: J. FRISTENSKY	SCALE: AS NOTED
PROJECT ENGINEER: G. BROWER	0 REFERENCE 1"
DESIGN APPROVAL: XXX	FACILITY NUMBER: XXX
PROJECT ACCEPTANCE: XXX	CONTRACT NO: E00335E14



DEPARTMENT OF NATURAL RESOURCES & PARKS
WASTEWATER TREATMENT DIVISION
LAKE HILLS TRUNK AND NORTHWEST LAKE SAMMAMISH INTERCEPTOR PROJECT

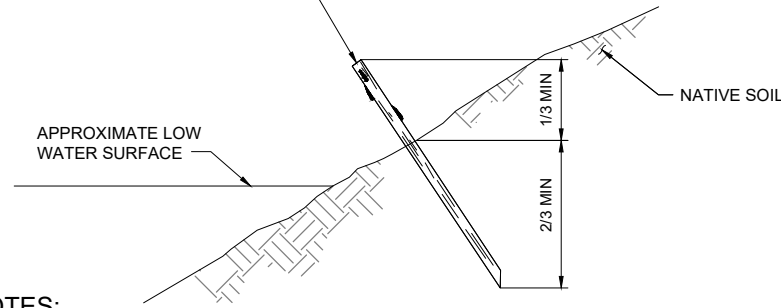
MULTIPLE SEGMENTS

PLANTING DETAILS

DCN:	DATE: September 2019
PROJECT FILE NO:	DRAWING NO: SR902
SHT NO / TOTAL 354 / 357	REV NO:

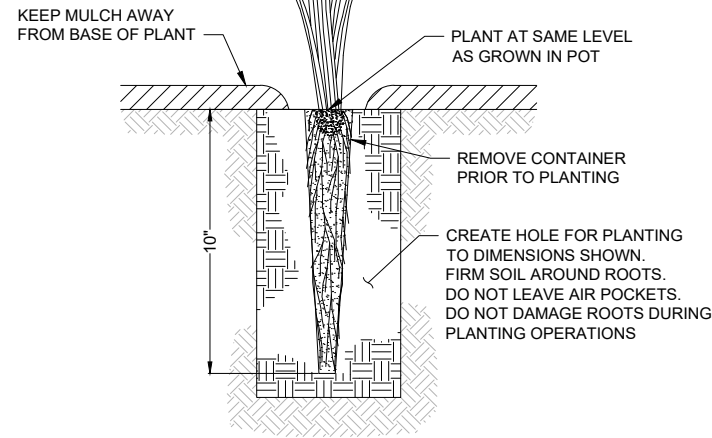
G:\PROJECTS\King County Lake Hills-Sammamish Interceptor\Drawings\CAD\Projectwise\Sheet\Drawings\Sheet\Planting\Details_multiseg.dwg | Layout: LP902
PLOT: Sep 17, 2019 04:11:21pm By jasonf
XREFS: x_LH_Border.dwg
IMAGES:

INSTALL LIVE STAKE APICAL END UP SO THAT AT LEAST TWO NODES/BUD SCARS ARE ABOVE GROUND WITH AT LEAST 2/3 OF STAKE BELOW GROUND



NOTES:

1. BASAL END OF LIVE STAKES SHALL BE 1 TO 2 INCHES IN DIAMETER.
2. KEEP LIVE STAKES COVERED, COOL, AND MOIST AT ALL TIMES PRIOR TO PLANTING. AT NO TIME SHOULD PLANT MATERIAL BE EXPOSED AND ALLOWED TO DRY OUT. LIVE STAKES CAN BE TEMPORARY STORED IN WATER PRIOR TO INSTALLATION.
3. PRE-DRIVE HOLE UTILIZING REBAR PRIOR TO INSERTING LIKE STAKE CUTTING. TAMP SOIL TO REMOVE AIR POCKETS. LIGHTLY DRIVE LIKE STAKE A MINIMUM OF 2/3 LENGTH BELOW GROUND UTILIZING A RUBBER Mallet. ENSURE LIVE STAKE CUTTING HAS MINIMUM OF TWO LIVE BUDS ABOVE GRADE.



LIVE STAKE PLANTING

SCALE: NTS

1
VARIES

10 CUBIC-INCH PLUG PLANTING

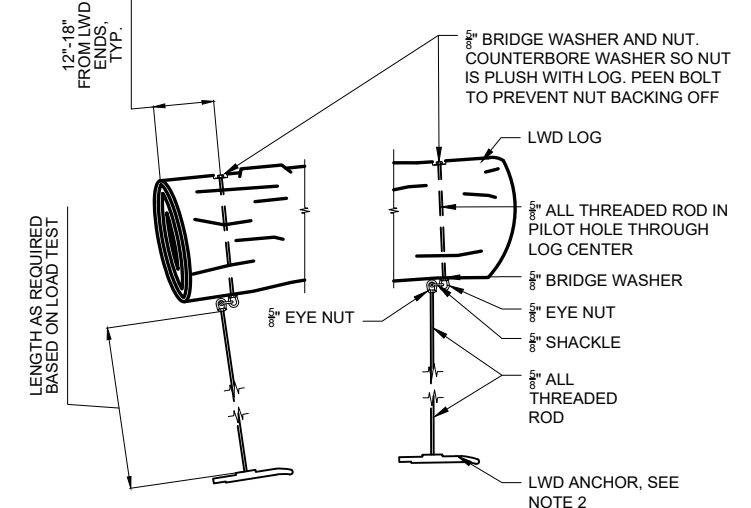
SCALE: NTS

2
VARIES

TRIANGULAR PLANT SPACING

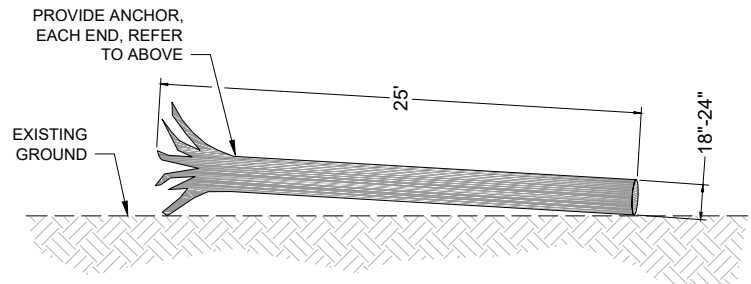
SCALE: NTS

3
VARIES



NOTES:

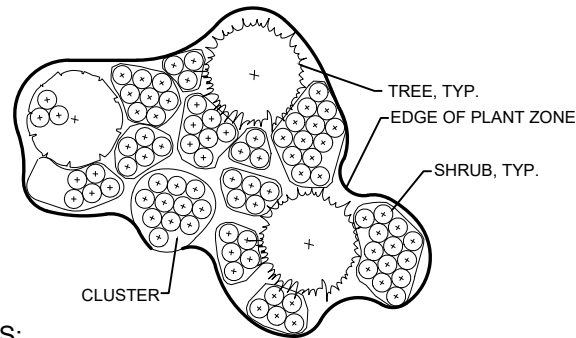
1. LWD-BANK LOG LENGTHS SHOWN IN PLAN ARE CONCEPTUAL AND NOT BASED ON CURRENT AVAILABILITY. ACTUAL CONFIGURATION TO BE FIELD DIRECTED BY THE PROJECT REPRESENTATIVE
2. TWO ANCHORS PER LWD-BANK LOG. ACTUAL ORIENTATION AND LOCATION OF ANCHORS SHALL BE DIRECTED BY THE PROJECT REPRESENTATIVE



LARGE WOODY DEBRIS (LWD)

SCALE: NTS

4
VARIES



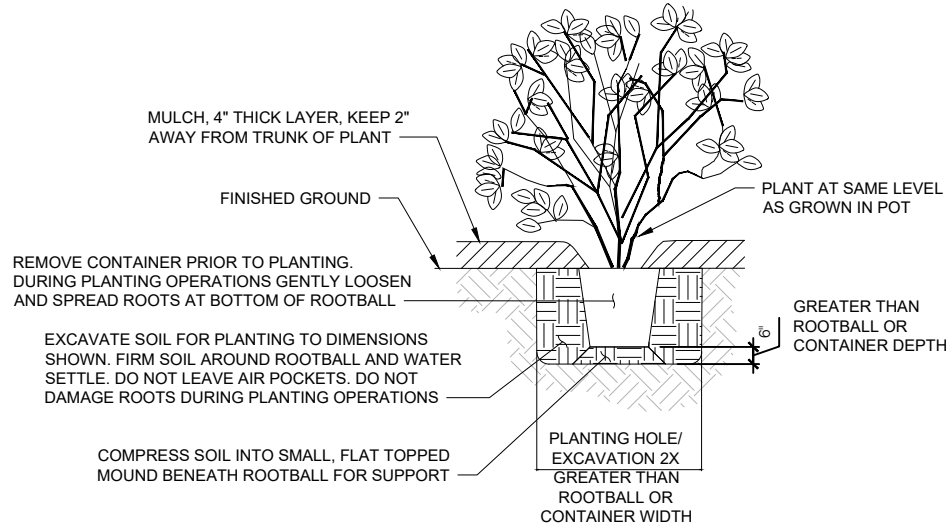
NOTES:

1. PLANT SHRUBS IN CLUSTERS OF UNEVEN NUMBERS (E.G. THREE, FIVE, SEVEN, ETC.)
2. PLANT ONE SPECIES OF SHRUBS IN CLUSTERS OF THREE, FIVE, SEVEN, ETC.
3. EVENLY SPACE CLUSTERS THROUGHOUT PLANTING AREA.
4. INTENT OF SHRUB PLANTING IS TO APPEAR NATURAL AND INFORMAL.
5. DO NOT LEAVE OPEN GAPS BETWEEN CLUSTERS.

SHRUB SPACING AROUND TREES

SCALE: NTS

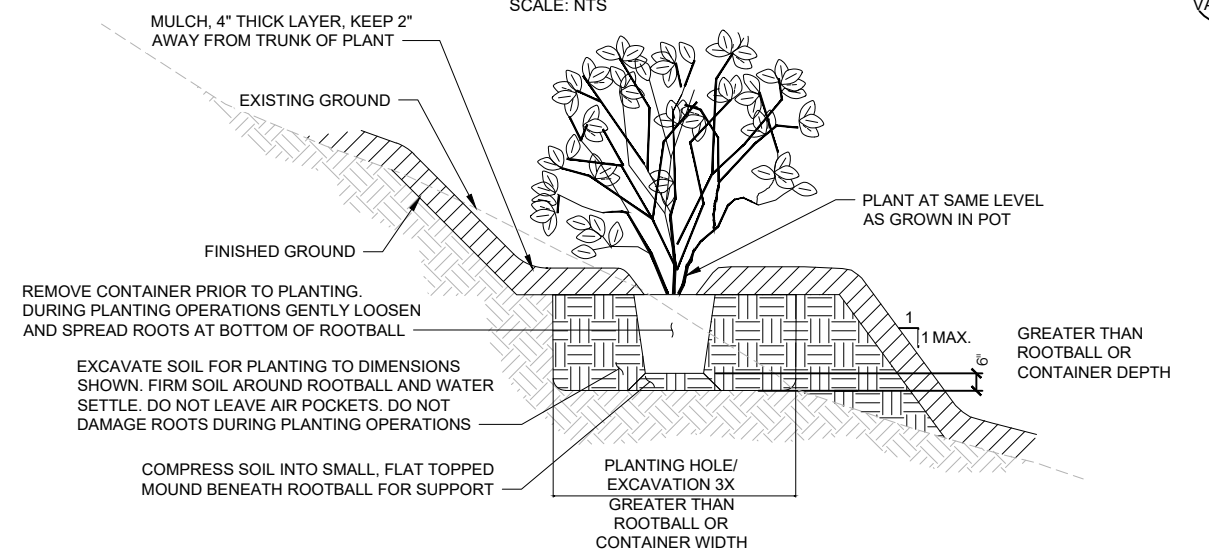
5
VARIES



FIVE, TWO, AND ONE GALLON CONTAINER PLANTING

SCALE: NTS

6
VARIES



FIVE, TWO, AND ONE GALLON CONTAINER PLANTING ON SLOPE

SCALE: NTS

7
VARIES

CALL 24 HOURS BEFORE YOU DIG: 811

NO	REVISION DESCRIPTION	BY	APVD	DATE

1721 8th Ave N
Seattle, WA 98109
206.325.6677
bergerpartnership.com

PERMIT ISSUE DRAWING

This document version is designed to contain sufficient relevant information for the applicable Permit Review submittal and approval process.

October 2019

DESIGNED/DRAWN: J. FRISTENSKY	SCALE: AS NOTED
PROJECT ENGINEER: G. BROWER	0 REFERENCE 1"
DESIGN APPROVAL: XXX	FACILITY NUMBER: XXX
PROJECT ACCEPTANCE: XXX	CONTRACT NO: E00335E14

DEPARTMENT OF NATURAL RESOURCES & PARKS
WASTEWATER TREATMENT DIVISION
LAKE HILLS TRUNK AND NORTHWEST
LAKE SAMMAMISH INTERCEPTOR PROJECT

MULTIPLE SEGMENTS

WETLAND DETAILS

DCN:	DATE: September 2019
PROJECT FILE NO:	DRAWING NO: SR903
SHT NO / TOTAL 355 / 357	REV NO:

G:\PROJECT\King County Lake Hills-Sammamish Interceptor\Drawings\CAD\Projectwise\Permit - Planting Details_multiseg.dwg | Layout: LP903
PLOTTED: Sep 17, 2019 04:00:06pm By Jasonf
XREFS: x_LH_Border.dwg IMAGES: