



King County

Lake Hills and NW Lake Sammamish Sewer Upgrade Project

Friends of Marymoor Park Briefing

January 22, 2020





Lake Hills and NW Lake Sammamish Sewer Upgrade Project

Agenda

- King County WTD
- Project overview & timeline
- What to expect during construction
 - Traffic
 - Tree/plant removal
 - Sammamish River Trail
 - Marymoor Park
 - Coordination w/ other projects
- What's next
- Our commitment to you

Objective

- Upgrade 4.5 miles of sewer pipes in Redmond to provide service for 50+ years





Lake Hills and NW Lake Sammamish Sewer Upgrade Project

Schedule

Lake Hills and NW Lake Sammamish Sewer Upgrade Project

TIMELINE



*This is an estimated project timeline and is likely to shift over the course of the project.



Lake Hills and NW Lake Sammamish Sewer Upgrade Project

Construction methods

- Primarily open trench
 - Most common pipe installation method
 - Surface impacts will include traffic detours, trail detours
- Short, trenchless sections
 - Protects environmentally sensitive areas
 - Limits surface impacts
 - Not appropriate for all situations





Lake Hills and NW Lake Sammamish Sewer Upgrade Project

What to expect during construction

- Typical work hours
 - 7 A.M. TO 7 P.M. Weekdays
 - 9 A.M. TO 6 P.M. Saturday
- Large equipment, truck traffic
- Noise, vibration, dust
- Trail closures and detours
- Road closures and detours






Lake Hills and NW Lake Sammamish Sewer Upgrade Project

Traffic

- Traffic impacts on West Lake Sammamish Parkway, 177th Ave NE, 180th Ave NE, NE 24th St
- You can expect:
 - Lane closures and detours
 - Reduced speed limits
 - Increased congestion, delays
 - Bus stop closures and reroutes



Vegetation Removal

 Working Limits





Lake Hills and NW Lake Sammamish Sewer Upgrade Project

Replanting





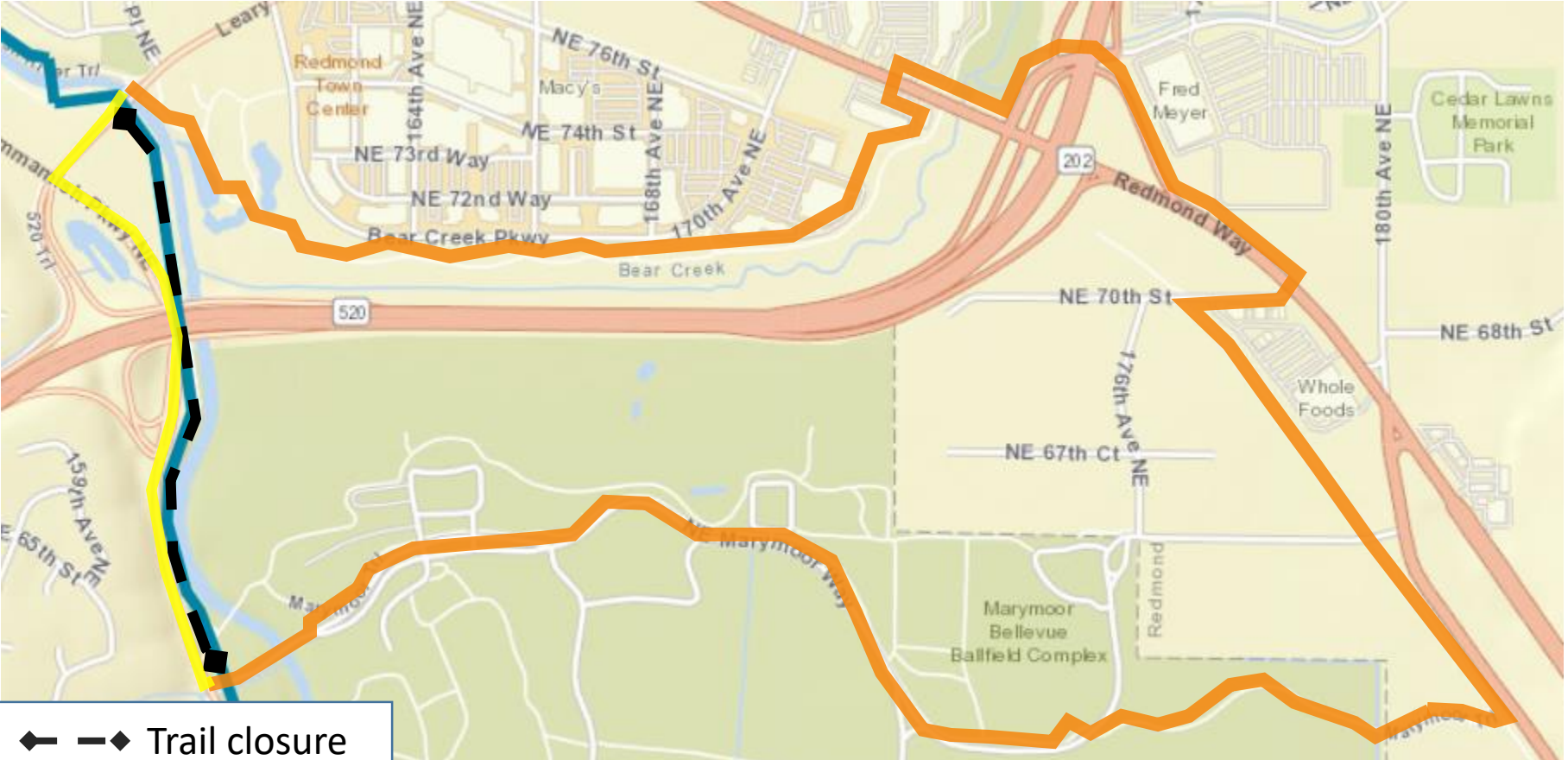
Lake Hills and NW Lake Sammamish Sewer Upgrade Project

Sammamish River Trail

- Intermittent closures over 3-year construction window
- Work will be completed in sections and may not be consecutive
- Closures will be between access points, requiring off-site detour routes
- Detour routes will vary between a half-mile to a few miles in length



Trail closure: Leary Way to Marymoor Park Entrance



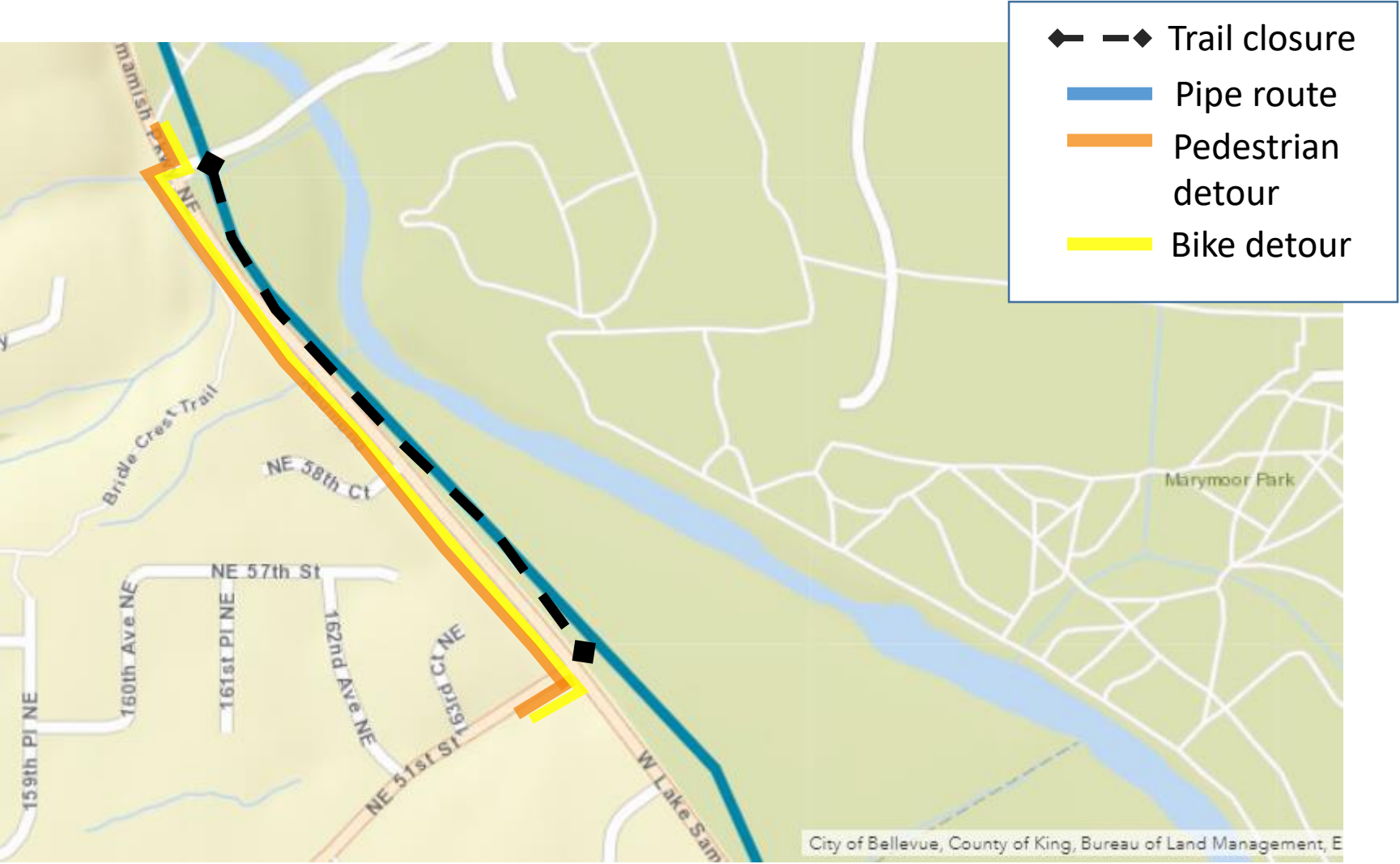
- ◆ - ◆ Trail closure
- Pipe route
- Pedestrian detour
- Bike detour



New sidewalk at Marymoor Park



Closure: Marymoor Park Entrance to NE 51st St





Lake Hills and NW Lake Sammamish Sewer Upgrade Project

Rendering of trail restoration looking north from Leary Way

New trees, shrubs and grass will be planted. Vegetation shown here depicts 5 years of growth.

Placement of logs, sticks, and branches on the bank of the Sammamish River will improve fish habitat.

Where possible, we'll protect some existing trees at the edge of the work area.

We will widen the trail will between NE 85th Street and Leary Way. The paved area will be widened to 14 feet, except under bridge and trestle crossings where the trail is constrained. A new four-foot-wide gravel shoulder will be added to the land side of the paved trail. The existing two-foot-wide gravel shoulder on the river side will be replaced as-is.



Lake Hills and NW Lake Sammamish Sewer Upgrade Project

Marymoor Park

- Work contained to west side of park
- New sidewalk at Marymoor Park entrance
- Trenchless construction at Marymoor Park entrance

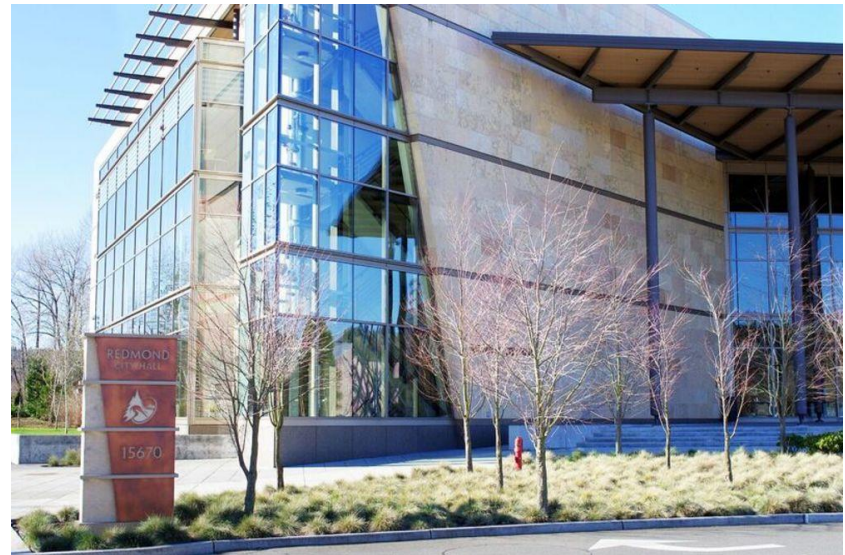




Lake Hills and NW Lake Sammamish Sewer Upgrade Project

Coordination w/ other projects

- Ongoing coordination with:
 - Sound Transit
 - City of Redmond
 - Microsoft
 - Lake Washington School District
- Seek opportunities to collaborate with other projects to reduce disruptions caused by multiple projects happening at once





Lake Hills and NW Lake Sammamish Sewer Upgrade Project

What's next?

- Conduct additional fieldwork
- Acquire necessary permits
- Complete design by 2020
- Hire contractor in early 2021
- Begin construction in mid 2021



Lake Hills and NW Lake Sammamish Sewer Upgrade Project

Our commitment to you

- Keep you up to date and informed
- Address concerns, answer questions
- Whenever possible, use your feedback to shape the design
- No surprises during construction





Lake Hills and NW Lake Sammamish Sewer Upgrade Project

Questions and comments

- **Contact** Kelly Foley Kruse, community relations at 206-477-8621 or kelly.foleykruse@kingcounty.gov
- **Visit** the project website at: www.kingcounty.gov/KCRedmondSewer
- **Sign up** for email updates on our website
- **Enroll** in text alerts: text **KING REDMONDSEWER** to **486-311**